



**INTERNATIONAL
GEMOLOGICAL
INSTITUTE**

DIAMOND REPORT

ELECTRONIC COPY

472185324



April 20, 2022
IGI Report Number 472185324
NATURAL DIAMOND
ROUND BRILLIANT
4.18 - 4.20 x 2.52 mm
Carat Weight 0.27 CARAT
Color Grade H
Clarity Grade VS 2
Cut Grade EXCELLENT
Polish EXCELLENT
Symmetry EXCELLENT
Fluorescence NONE
Inscription(s) IGI 472185324
Comments: IDEAL CUT ROUND
BRILLIANT

April 20, 2022
IGI Report Number 472185324
Description NATURAL DIAMOND
Shape and Cutting Style ROUND BRILLIANT
Measurements 4.18 - 4.20 x 2.52 mm

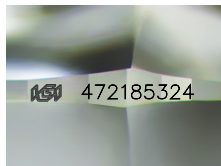
GRADING RESULTS

Carat Weight 0.27 CARAT
Color Grade H
Clarity Grade VS 2
Cut Grade EXCELLENT

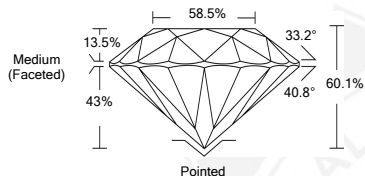
ADDITIONAL GRADING INFORMATION

Polish EXCELLENT
Symmetry EXCELLENT
Fluorescence NONE

Identification Features CLOUD, FEATHER
Inscription(s) IGI 472185324
Comments: IDEAL CUT ROUND BRILLIANT



Sample Image Used



COLOR

D - F	G - J	K - M	N - R	S - Z	FANCY
Colorless	Near Colorless	Slightly Tinted	Very Light Color	Light Color	

CLARITY

IF	VS ¹⁻²	VS ¹⁻²	SI ¹⁻²	I ¹⁻²
Internally Flawless	Very Very Slightly Included	Very Slightly Included	Slightly Included	Included



April 20, 2022
IGI Report Number 472185324
NATURAL DIAMOND
ROUND BRILLIANT
4.18 - 4.20 x 2.52 mm
Carat Weight 0.27 CARAT
Color Grade H
Clarity Grade VS 2
Cut Grade EXCELLENT
Polish EXCELLENT
Symmetry EXCELLENT
Fluorescence NONE
Inscription(s) IGI 472185324
Comments: IDEAL CUT ROUND
BRILLIANT

