



INTERNATIONAL GEMOLOGICAL INSTITUTE

490184922



September 7, 2021

IGI Report Number 490184922

NATURAL DIAMOND
RECTANGULAR PRINCESS

4.65 x 4.12 x 2.95 mm

Carat Weight 0.45 CARAT
Color Grade K
Clarity Grade VS 2
Pol - Sym GOOD
Proportions VERY GOOD
Fluorescence VERY SLIGHT
Inscription(s) IGI 490184922

DIAMOND REPORT

ELECTRONIC COPY

September 7, 2021

IGI Report Number

490184922

Description

NATURAL DIAMOND

Shape and Cutting Style

RECTANGULAR PRINCESS

Measurements

4.65 x 4.12 x 2.95 mm

GRADING RESULTS

Carat Weight

0.45 CARAT

Color Grade

K

Clarity Grade

VS 2

ADDITIONAL GRADING INFORMATION

Polish - Symmetry

GOOD

Proportions

VERY GOOD

Fluorescence

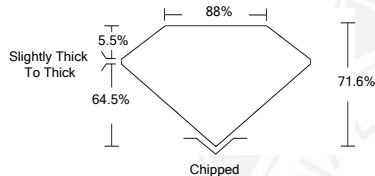
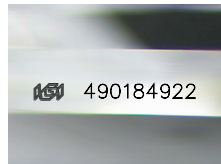
VERY SLIGHT

Identification Features

CHIP, FEATHER

Inscription(s)

IGI 490184922



COLOR

D - F	G - J	K - M	N - R	S - Z	FANCY
Colorless	Near Colorless	Slightly Tinted	Very Light Color	Light Color	

CLARITY

IF	VS ¹⁻²	VS ¹⁻²	SI ¹⁻²	I ¹⁻²
Internally Flawless	Very Very Slightly Included	Very Slightly Included	Slightly Included	Included



September 7, 2021

IGI Report Number 490184922

NATURAL DIAMOND
RECTANGULAR PRINCESS

4.65 x 4.12 x 2.95 mm

Carat Weight 0.45 CARAT
Color Grade K
Clarity Grade VS 2
Pol - Sym GOOD
Proportions VERY GOOD
Fluorescence VERY SLIGHT
Inscription(s) IGI 490184922

© IGI 2020, International Gemological Institute

FD - 10 20



THIS DOCUMENT WAS PRODUCED WITH THE FOLLOWING SECURITY MEASURES: SPECIAL DOCUMENT PAPER, INK SCREENS, WATERMARK BACKGROUND DESIGN, HOLOGRAM AND OTHER SECURITY FEATURES NOT LISTED AND DO EXCEED DOCUMENT SECURITY INDUSTRY GUIDELINES.