



INTERNATIONAL GEMOLOGICAL INSTITUTE

490184925



August 31, 2021

IGI Report Number 490184925

NATURAL DIAMOND
RECTANGULAR PRINCESS

4.73 x 4.32 x 2.75 mm

Carat Weight 0.47 CARAT
Color Grade K
Clarity Grade VS 2
Pol - Sym GOOD
Proportions VERY GOOD
Fluorescence NONE
Inscription(s) IGI 490184925

DIAMOND REPORT

ELECTRONIC COPY

August 31, 2021
IGI Report Number 490184925
Description NATURAL DIAMOND
Shape and Cutting Style RECTANGULAR PRINCESS
Measurements 4.73 x 4.32 x 2.75 mm

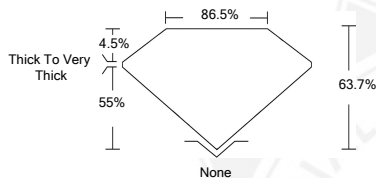
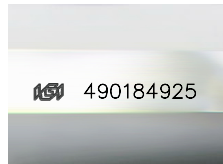
GRADING RESULTS

Carat Weight 0.47 CARAT
Color Grade K
Clarity Grade VS 2

ADDITIONAL GRADING INFORMATION

Polish - Symmetry GOOD
Proportions VERY GOOD
Fluorescence NONE

Identification Features CAVITY, CHIP, FEATHER, INDENTED
NATURAL
Inscription(s) IGI 490184925



August 31, 2021

IGI Report Number 490184925

NATURAL DIAMOND
RECTANGULAR PRINCESS

4.73 x 4.32 x 2.75 mm

Carat Weight 0.47 CARAT
Color Grade K
Clarity Grade VS 2
Pol - Sym GOOD
Proportions VERY GOOD
Fluorescence NONE
Inscription(s) IGI 490184925

COLOR

D - F	G - J	K - M	N - R	S - Z	FANCY
Colorless	Near Colorless	Slightly Tinted	Very Light Color	Light Color	

CLARITY

IF	VS ¹⁻²	VS ¹⁻²	SI ¹⁻²	I ¹⁻²
Internally Flawless	Very Very Slightly Included	Very Slightly Included	Slightly Included	Included

© IGI 2020, International Gemological Institute

FD - 10 20



THIS DOCUMENT WAS PRODUCED WITH THE FOLLOWING SECURITY MEASURES: SPECIAL DOCUMENT PAPER, INK SCREENS, WATERMARK, BACKGROUND DESIGNS, HOLOGRAM AND OTHER SECURITY FEATURES NOT LISTED AND DO EXCEED DOCUMENT SECURITY INDUSTRY GUIDELINES.