



**INTERNATIONAL
GEMOLOGICAL
INSTITUTE**

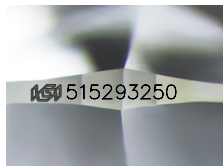
515293250



April 28, 2022
IGI Report Number 515293250
NATURAL DIAMOND
ROUND BRILLIANT
4.66 - 4.68 x 2.93 mm
Carat Weight 0.40 CARAT
Color Grade I
Clarity Grade VS 1
Cut Grade EXCELLENT
Polish EXCELLENT
Symmetry EXCELLENT
Fluorescence NONE
Inscription(s) IGI 515293250

DIAMOND REPORT

ELECTRONIC COPY



IGI 515293250

Sample Image Used

April 28, 2022
IGI Report Number 515293250
Description NATURAL DIAMOND
Shape and Cutting Style ROUND BRILLIANT
Measurements 4.66 - 4.68 x 2.93 mm

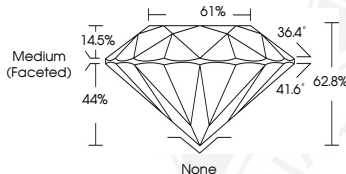
GRADING RESULTS

Carat Weight 0.40 CARAT
Color Grade I
Clarity Grade VS 1
Cut Grade EXCELLENT

ADDITIONAL GRADING INFORMATION

Polish EXCELLENT
Symmetry EXCELLENT
Fluorescence NONE

Identification Features CAVITY, CRYSTAL, FEATHER, PINPOINT
Inscription(s) IGI 515293250



April 28, 2022
IGI Report Number 515293250
NATURAL DIAMOND
ROUND BRILLIANT
4.66 - 4.68 x 2.93 mm
Carat Weight 0.40 CARAT
Color Grade I
Clarity Grade VS 1
Cut Grade EXCELLENT
Polish EXCELLENT
Symmetry EXCELLENT
Fluorescence NONE
Inscription(s) IGI 515293250

COLOR

D - F	G - J	K - M	N - R	S - Z	FANCY
Colorless	Near Colorless	Slightly Tinted	Very Light Color	Light Color	

CLARITY

IF	VVS ¹⁻²	VS ¹⁻²	SI ¹⁻²	I ¹⁻²
Internally Flawless	Very Very Slightly Included	Very Slightly Included	Slightly Included	Included

© IGI 2020, International Gemological Institute

FD - 10 20



THIS DOCUMENT WAS PRODUCED WITH THE FOLLOWING SECURITY MEASURES: SPECIAL DOCUMENT PAPER, INK SCREENS, WATERMARK, BACKGROUND DESIGNS, HOLOGRAM AND OTHER SECURITY FEATURES NOT LISTED AND DO EXCEED DOCUMENT SECURITY INDUSTRY GUIDELINES.