



INTERNATIONAL GEMOLOGICAL INSTITUTE

DIAMOND REPORT

ELECTRONIC COPY

February 27, 2023
IGI Report Number 537229507
Description NATURAL DIAMOND
Shape and Cutting Style SQUARE EMERALD CUT
Measurements 5.42 x 5.41 x 3.52 mm

GRADING RESULTS

Carat Weight 0.87 CARAT
Color Grade G
Clarity Grade VVS 2
Cut Grade VERY GOOD

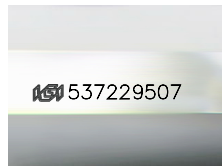
ADDITIONAL GRADING INFORMATION

Polish EXCELLENT
Symmetry EXCELLENT
Fluorescence NONE

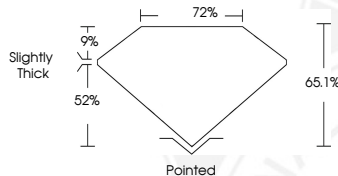
Identification Features FEATHER, CRYSTAL
Inscription(s) IGI 537229507



537229507



Sample Image Used



COLOR

| D - F | G - J | K - M | N - R | S - Z | FANCY |
|-----------|----------------|-----------------|------------------|-------------|-------|
| Colorless | Near Colorless | Slightly Tinted | Very Light Color | Light Color | |

CLARITY

| IF | VS ¹⁻² | VS ¹⁻² | SI ¹⁻² | I ¹⁻² |
|---------------------|-----------------------------|------------------------|-------------------|------------------|
| Internally Flawless | Very Very Slightly Included | Very Slightly Included | Slightly Included | Included |

© IGI 2020, International Gemological Institute

FD - 10 20



February 27, 2023
IGI Report Number 537229507
NATURAL DIAMOND
SQUARE EMERALD CUT
5.42 x 5.41 x 3.52 mm
Carat Weight 0.87 CARAT
Color Grade G
Clarity Grade VVS 2
Cut Grade VERY GOOD
Polish EXCELLENT
Symmetry EXCELLENT
Fluorescence NONE
Inscription(s) IGI 537229507



February 27, 2023
IGI Report Number 537229507
NATURAL DIAMOND
SQUARE EMERALD CUT
5.42 x 5.41 x 3.52 mm
Carat Weight 0.87 CARAT
Color Grade G
Clarity Grade VVS 2
Cut Grade VERY GOOD
Polish EXCELLENT
Symmetry EXCELLENT
Fluorescence NONE
Inscription(s) IGI 537229507



THIS DOCUMENT WAS PRODUCED WITH THE FOLLOWING SECURITY MEASURES: SPECIAL DOCUMENT PAPER, INK SCREENS, WATERMARK, BACKGROUND DESIGN, HOLOGRAM AND OTHER SECURITY FEATURES NOT LISTED AND DO EXCEED DOCUMENT SECURITY INDUSTRY GUIDELINES.