



**INTERNATIONAL
GEMOLOGICAL
INSTITUTE**

DIAMOND REPORT

ELECTRONIC COPY

August 23, 2022
IGI Report Number 538269285
Description NATURAL DIAMOND
Shape and Cutting Style ROUND BRILLIANT
Measurements 4.09 - 4.13 x 2.53 mm

GRADING RESULTS

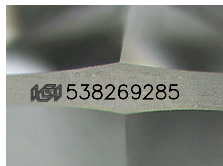
Carat Weight 0.26 CARAT
Color Grade H
Clarity Grade VVS 1
Cut Grade GOOD

ADDITIONAL GRADING INFORMATION

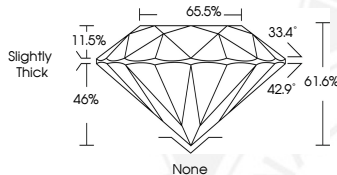
Polish VERY GOOD
Symmetry VERY GOOD
Fluorescence VERY SLIGHT
Identification Features PINPOINT, FEATHER
Inscription(s) IGI 538269285



538269285



Sample Image Used



COLOR

D - F	G - J	K - M	N - R	S - Z	FANCY
Colorless	Near Colorless	Slightly Tinted	Very Light Color	Light Color	

CLARITY

IF	VVS ¹⁻²	VS ¹⁻²	SI ¹⁻²	I ¹⁻²
Internally Flawless	Very Very Slightly Included	Very Slightly Included	Slightly Included	Included

© IGI 2020, International Gemological Institute

FD - 10 20



August 23, 2022
IGI Report Number 538269285
NATURAL DIAMOND
ROUND BRILLIANT
4.09 - 4.13 x 2.53 mm
Carat Weight 0.26 CARAT
Color Grade H
Clarity Grade VVS 1
Cut Grade GOOD
Polish VERY GOOD
Symmetry VERY GOOD
Fluorescence VERY SLIGHT
Inscription(s) IGI 538269285



August 23, 2022
IGI Report Number 538269285
NATURAL DIAMOND
ROUND BRILLIANT
4.09 - 4.13 x 2.53 mm
Carat Weight 0.26 CARAT
Color Grade H
Clarity Grade VVS 1
Cut Grade GOOD
Polish VERY GOOD
Symmetry VERY GOOD
Fluorescence VERY SLIGHT
Inscription(s) IGI 538269285



THIS DOCUMENT WAS PRODUCED WITH THE FOLLOWING SECURITY MEASURES: SPECIAL DOCUMENT PAPER, INK SCREENS, WATERMARK, BACKGROUND DESIGNS, HOLOGRAM AND OTHER SECURITY FEATURES NOT LISTED AND DO EXCEED DOCUMENT SECURITY INDUSTRY GUIDELINES.