



**INTERNATIONAL
GEMOLOGICAL
INSTITUTE**

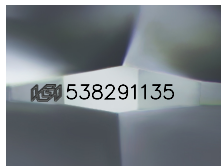
538291135



August 11, 2022
IGI Report Number 538291135
NATURAL DIAMOND
ROUND BRILLIANT
4.64 - 4.68 x 2.93 mm
Carat Weight 0.40 CARAT
Color Grade I
Clarity Grade SI 1
Cut Grade EXCELLENT
Polish EXCELLENT
Symmetry VERY GOOD
Fluorescence NONE
Inscription(s) IGI 538291135

DIAMOND REPORT

ELECTRONIC COPY



Sample Image Used

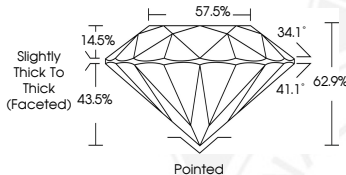
August 11, 2022
IGI Report Number 538291135
Description NATURAL DIAMOND
Shape and Cutting Style ROUND BRILLIANT
Measurements 4.64 - 4.68 x 2.93 mm

GRADING RESULTS

Carat Weight 0.40 CARAT
Color Grade I
Clarity Grade SI 1
Cut Grade EXCELLENT

ADDITIONAL GRADING INFORMATION

Polish EXCELLENT
Symmetry VERY GOOD
Fluorescence NONE
Identification Features CRYSTAL FEATHER
Inscription(s) IGI 538291135



COLOR

D - F	G - J	K - M	N - R	S - Z	FANCY
Colorless	Near Colorless	Slightly Tinted	Very Light Color	Light Color	

CLARITY

IF	VS ¹⁻²	VS ¹⁻²	SI ¹⁻²	I ¹⁻²
Internally Flawless	Very Very Slightly Included	Very Slightly Included	Slightly Included	Included



August 11, 2022
IGI Report Number 538291135
NATURAL DIAMOND
ROUND BRILLIANT
4.64 - 4.68 x 2.93 mm
Carat Weight 0.40 CARAT
Color Grade I
Clarity Grade SI 1
Cut Grade EXCELLENT
Polish EXCELLENT
Symmetry VERY GOOD
Fluorescence NONE
Inscription(s) IGI 538291135



THIS DOCUMENT WAS PRODUCED WITH THE FOLLOWING SECURITY MEASURES: SPECIAL DOCUMENT PAPER, INK SCREENS, WATERMARK, BACKGROUND DESIGN, HOLOGRAM AND OTHER SECURITY FEATURES NOT LISTED AND DO EXCEED DOCUMENT SECURITY INDUSTRY GUIDELINES.