



**INTERNATIONAL
GEMOLOGICAL
INSTITUTE**

DIAMOND REPORT

ELECTRONIC COPY

December 20, 2022
IGI Report Number 553245695
Description NATURAL DIAMOND
Shape and Cutting Style ROUND BRILLIANT
Measurements 3.64 - 3.68 x 2.30 mm

GRADING RESULTS

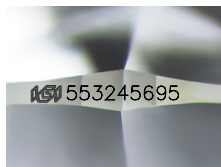
Carat Weight 0.19 CARAT
Color Grade G
Clarity Grade VVS 1
Cut Grade VERY GOOD

ADDITIONAL GRADING INFORMATION

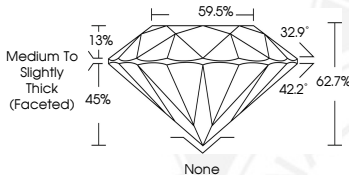
Polish EXCELLENT
Symmetry VERY GOOD
Fluorescence NONE
Identification Features FEATHER, PINPOINT
Inscription(s) IGI 553245695



553245695



Sample Image Used



COLOR

D - F	G - J	K - M	N - R	S - Z	FANCY
Colorless	Near Colorless	Slightly Tinted	Very Light Color	Light Color	

CLARITY

IF	VVS ¹⁻²	VS ¹⁻²	SI ¹⁻²	I ¹⁻²
Internally Flawless	Very Very Slightly Included	Very Slightly Included	Slightly Included	Included

© IGI 2020, International Gemological Institute

FD - 10 20



December 20, 2022
IGI Report Number 553245695
NATURAL DIAMOND
ROUND BRILLIANT
3.64 - 3.68 x 2.30 mm
Carat Weight 0.19 CARAT
Color Grade G
Clarity Grade VVS 1
Cut Grade VERY GOOD
Polish EXCELLENT
Symmetry VERY GOOD
Fluorescence NONE
Inscription(s) IGI 553245695



December 20, 2022
IGI Report Number 553245695
NATURAL DIAMOND
ROUND BRILLIANT
3.64 - 3.68 x 2.30 mm
Carat Weight 0.19 CARAT
Color Grade G
Clarity Grade VVS 1
Cut Grade VERY GOOD
Polish EXCELLENT
Symmetry VERY GOOD
Fluorescence NONE
Inscription(s) IGI 553245695



THIS DOCUMENT WAS PRODUCED WITH THE FOLLOWING SECURITY MEASURES: SPECIAL DOCUMENT PAPER, INK SCREENS, WATERMARK, BACKGROUND DESIGNS, HOLOGRAM AND OTHER SECURITY FEATURES NOT LISTED AND DO EXCEED DOCUMENT SECURITY INDUSTRY GUIDELINES.