



**INTERNATIONAL  
GEMOLOGICAL  
INSTITUTE**

**DIAMOND REPORT**

**ELECTRONIC COPY**

December 21, 2022  
IGI Report Number 559259741  
Description NATURAL DIAMOND  
Shape and Cutting Style ROUND BRILLIANT  
Measurements 3.94 - 3.99 x 2.36 mm

**GRADING RESULTS**

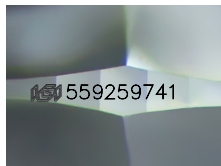
Carat Weight 0.22 CARAT  
Color Grade E  
Clarity Grade INTERNALLY FLAWLESS  
Cut Grade EXCELLENT

**ADDITIONAL GRADING INFORMATION**

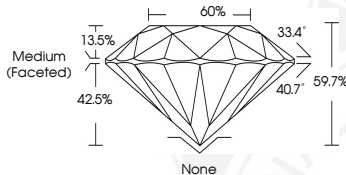
Polish VERY GOOD  
Symmetry EXCELLENT  
Fluorescence NONE  
Inscription(s) IGI 559259741



559259741



Sample Image Used



December 21, 2022  
IGI Report Number 559259741  
NATURAL DIAMOND  
ROUND BRILLIANT  
3.94 - 3.99 x 2.36 mm  
Carat Weight 0.22 CARAT  
Color Grade E  
Clarity Grade INTERNALLY FLAWLESS  
Cut Grade EXCELLENT  
Polish VERY GOOD  
Symmetry EXCELLENT  
Fluorescence NONE  
Inscription(s) IGI 559259741



December 21, 2022  
IGI Report Number 559259741  
NATURAL DIAMOND  
ROUND BRILLIANT  
3.94 - 3.99 x 2.36 mm  
Carat Weight 0.22 CARAT  
Color Grade E  
Clarity Grade INTERNALLY FLAWLESS  
Cut Grade EXCELLENT  
Polish VERY GOOD  
Symmetry EXCELLENT  
Fluorescence NONE  
Inscription(s) IGI 559259741

**COLOR**

D - F	G - J	K - M	N - R	S - Z	FANCY
Colorless	Near Colorless	Slightly Tinted	Very Light Color	Light Color	

**CLARITY**

IF	VVS <sup>1-2</sup>	VS <sup>1-2</sup>	SI <sup>1-2</sup>	I <sup>1-2</sup>
Internally Flawless	Very Very Slightly Included	Very Slightly Included	Slightly Included	Included

© IGI 2020, International Gemological Institute

FD - 10 20



THIS DOCUMENT WAS PRODUCED WITH THE FOLLOWING SECURITY MEASURES: SPECIAL DOCUMENT PAPER, INK SCREENS, WATERMARK, BACKGROUND DESIGNS, HOLOGRAM AND OTHER SECURITY FEATURES NOT LISTED AND DO EXCEED DOCUMENT SECURITY INDUSTRY GUIDELINES.