



**INTERNATIONAL
GEMOLOGICAL
INSTITUTE**

DIAMOND REPORT

ELECTRONIC COPY

April 25, 2023
IGI Report Number 577306788
Description NATURAL DIAMOND
Shape and Cutting Style ROUND BRILLIANT
Measurements 5.41 - 5.43 x 3.25 mm

GRADING RESULTS

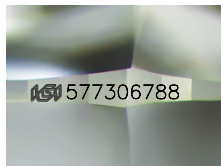
Carat Weight 0.59 CARAT
Color Grade I
Clarity Grade INTERNALLY FLAWLESS
Cut Grade EXCELLENT

ADDITIONAL GRADING INFORMATION

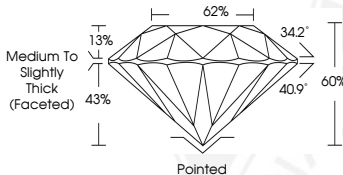
Polish EXCELLENT
Symmetry EXCELLENT
Fluorescence NONE
Inscription(s) IGI 577306788



577306788



Sample Image Used



April 25, 2023
IGI Report Number 577306788
NATURAL DIAMOND
ROUND BRILLIANT
5.41 - 5.43 x 3.25 mm
Carat Weight 0.59 CARAT
Color Grade I
Clarity Grade INTERNALLY FLAWLESS
Cut Grade EXCELLENT
Polish EXCELLENT
Symmetry EXCELLENT
Fluorescence NONE
Inscription(s) IGI 577306788



April 25, 2023
IGI Report Number 577306788
NATURAL DIAMOND
ROUND BRILLIANT
5.41 - 5.43 x 3.25 mm
Carat Weight 0.59 CARAT
Color Grade I
Clarity Grade INTERNALLY FLAWLESS
Cut Grade EXCELLENT
Polish EXCELLENT
Symmetry EXCELLENT
Fluorescence NONE
Inscription(s) IGI 577306788

COLOR

D - F	G - J	K - M	N - R	S - Z	FANCY
Colorless	Near Colorless	Slightly Tinted	Very Light Color	Light Color	

CLARITY

IF	VS ¹⁻²	VS ¹⁻²	SI ¹⁻²	I ¹⁻²
Internally Flawless	Very Very Slightly Included	Very Slightly Included	Slightly Included	Included

© IGI 2020, International Gemological Institute FD - 10 20



THIS DOCUMENT WAS PRODUCED WITH THE FOLLOWING SECURITY MEASURES: SPECIAL DOCUMENT PAPER, INK SCREENS, WATERMARK, BACKGROUND DESIGN, HOLOGRAM AND OTHER SECURITY FEATURES NOT LISTED AND DO EXCEED DOCUMENT SECURITY INDUSTRY GUIDELINES.