



**INTERNATIONAL  
GEMOLOGICAL  
INSTITUTE**

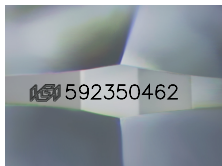
592350462



August 21, 2023  
IGI Report Number 592350462  
NATURAL DIAMOND  
ROUND BRILLIANT  
4.18 - 4.20 x 2.51 mm  
Carat Weight 0.27 CARAT  
Color Grade F  
Clarity Grade SI 1  
Cut Grade EXCELLENT  
Polish VERY GOOD  
Symmetry VERY GOOD  
Fluorescence NONE  
Inscription(s) IGI 592350462

**DIAMOND REPORT**

**ELECTRONIC COPY**



Sample Image Used

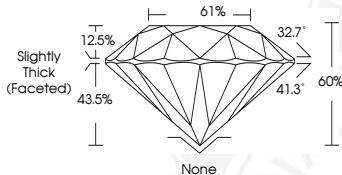
August 21, 2023  
IGI Report Number 592350462  
Description NATURAL DIAMOND  
Shape and Cutting Style ROUND BRILLIANT  
Measurements 4.18 - 4.20 x 2.51 mm

**GRADING RESULTS**

Carat Weight 0.27 CARAT  
Color Grade F  
Clarity Grade SI 1  
Cut Grade EXCELLENT

**ADDITIONAL GRADING INFORMATION**

Polish VERY GOOD  
Symmetry VERY GOOD  
Fluorescence NONE  
Identification Features CRYSTAL, CLOUD  
Inscription(s) IGI 592350462



**COLOR**

D - F	G - J	K - M	N - R	S - Z	FANCY
Colorless	Near Colorless	Slightly Tinted	Very Light Color	Light Color	

**CLARITY**

IF	VS <sup>1-2</sup>	VS <sup>1-2</sup>	SI <sup>1-2</sup>	I <sup>1-2</sup>
Internally Flawless	Very Very Slightly Included	Very Slightly Included	Slightly Included	Included

© IGI 2020, International Gemological Institute FD - 10 20



August 21, 2023  
IGI Report Number 592350462  
NATURAL DIAMOND  
ROUND BRILLIANT  
4.18 - 4.20 x 2.51 mm  
Carat Weight 0.27 CARAT  
Color Grade F  
Clarity Grade SI 1  
Cut Grade EXCELLENT  
Polish VERY GOOD  
Symmetry VERY GOOD  
Fluorescence NONE  
Inscription(s) IGI 592350462



THIS DOCUMENT WAS PRODUCED WITH THE FOLLOWING SECURITY MEASURES: SPECIAL DOCUMENT PAPER, INK SCREENS, WATERMARK, BACKGROUND DESIGN, HOLOGRAM AND OTHER SECURITY FEATURES NOT LISTED AND DO EXCEED DOCUMENT SECURITY INDUSTRY GUIDELINES.