



**INTERNATIONAL
GEMOLOGICAL
INSTITUTE**

601317546

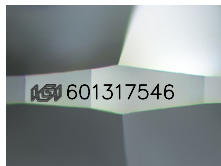


October 12, 2023
IGI Report Number 601317546
NATURAL DIAMOND
ROUND BRILLIANT
4.35 - 4.38 x 2.71 mm
Carat Weight 0.32 CARAT
Color Grade H
Clarity Grade VS 1
Cut Grade EXCELLENT
Polish EXCELLENT
Symmetry EXCELLENT
Fluorescence NONE
Inscription(s) IGI 601317546
Comments: IDEAL CUT ROUND BRILLIANT

DIAMOND REPORT

ELECTRONIC COPY

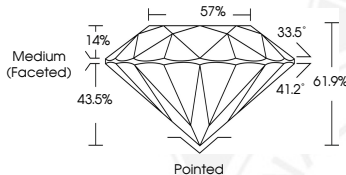
October 12, 2023
IGI Report Number 601317546
Description NATURAL DIAMOND
Shape and Cutting Style ROUND BRILLIANT
Measurements 4.35 - 4.38 x 2.71 mm



Sample Image Used

GRADING RESULTS

Carat Weight 0.32 CARAT
Color Grade H
Clarity Grade VS 1
Cut Grade EXCELLENT



October 12, 2023
IGI Report Number 601317546
NATURAL DIAMOND
ROUND BRILLIANT
4.35 - 4.38 x 2.71 mm
Carat Weight 0.32 CARAT
Color Grade H
Clarity Grade VS 1
Cut Grade EXCELLENT
Polish EXCELLENT
Symmetry EXCELLENT
Fluorescence NONE
Inscription(s) IGI 601317546
Comments: IDEAL CUT ROUND BRILLIANT

ADDITIONAL GRADING INFORMATION

Polish EXCELLENT
Symmetry EXCELLENT
Fluorescence NONE

Identification Features CRYSTAL, CLOUD
Inscription(s) IGI 601317546
Comments: IDEAL CUT ROUND BRILLIANT

COLOR

D - F	G - J	K - M	N - R	S - Z	FANCY
Colorless	Near Colorless	Slightly Tinted	Very Light Color	Light Color	

CLARITY

IF	VS ¹⁻²	VS ¹⁻²	SI ¹⁻²	I ¹⁻²
Internally Flawless	Very Very Slightly Included	Very Slightly Included	Slightly Included	Included



© IGI 2020, International Gemological Institute FD - 10 20



THIS DOCUMENT WAS PRODUCED WITH THE FOLLOWING SECURITY MEASURES: SPECIAL DOCUMENT PAPER, INK SCREENS, WATERMARK, BACKGROUND DESIGN, HOLOGRAM AND OTHER SECURITY FEATURES NOT LISTED AND DO EXCEED DOCUMENT SECURITY INDUSTRY GUIDELINES.