



**INTERNATIONAL  
GEMOLOGICAL  
INSTITUTE**

**DIAMOND REPORT**

**ELECTRONIC COPY**

December 22, 2023  
 IGI Report Number 608383454  
 Description NATURAL DIAMOND  
 Shape and Cutting Style ROUND BRILLIANT  
 Measurements 4.24 - 4.26 x 2.52 mm

**GRADING RESULTS**

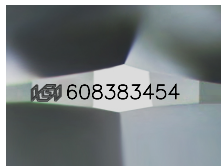
Carat Weight 0.28 CARAT  
 Color Grade E  
 Clarity Grade INTERNALLY FLAWLESS  
 Cut Grade VERY GOOD

**ADDITIONAL GRADING INFORMATION**

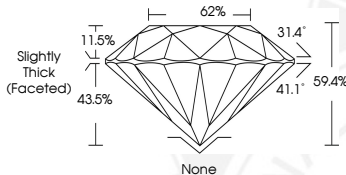
Polish EXCELLENT  
 Symmetry VERY GOOD  
 Fluorescence NONE  
 Inscription(s) IGI 608383454



608383454



Sample Image Used



December 22, 2023  
 IGI Report Number 608383454  
 NATURAL DIAMOND  
 ROUND BRILLIANT  
 4.24 - 4.26 x 2.52 mm  
 Carat Weight 0.28 CARAT  
 Color Grade E  
 Clarity Grade INTERNALLY FLAWLESS  
 Cut Grade VERY GOOD  
 Polish EXCELLENT  
 Symmetry VERY GOOD  
 Fluorescence NONE  
 Inscription(s) IGI 608383454



December 22, 2023  
 IGI Report Number 608383454  
 NATURAL DIAMOND  
 ROUND BRILLIANT  
 4.24 - 4.26 x 2.52 mm  
 Carat Weight 0.28 CARAT  
 Color Grade E  
 Clarity Grade INTERNALLY FLAWLESS  
 Cut Grade VERY GOOD  
 Polish EXCELLENT  
 Symmetry VERY GOOD  
 Fluorescence NONE  
 Inscription(s) IGI 608383454

**COLOR**

D - F	G - J	K - M	N - R	S - Z	FANCY
Colorless	Near Colorless	Slightly Tinted	Very Light Color	Light Color	

**CLARITY**

IF	VVS <sup>1-2</sup>	VS <sup>1-2</sup>	SI <sup>1-2</sup>	I <sup>1-2</sup>
Internally Flawless	Very Very Slightly Included	Very Slightly Included	Slightly Included	Included

© IGI 2020, International Gemological Institute

FD - 10 20



THIS DOCUMENT WAS PRODUCED WITH THE FOLLOWING SECURITY MEASURES: SPECIAL DOCUMENT PAPER, INK SCREENS, WATERMARK, BACKGROUND DESIGNS, HOLOGRAM AND OTHER SECURITY FEATURES NOT LISTED AND DO EXCEED DOCUMENT SECURITY INDUSTRY GUIDELINES.