



**INTERNATIONAL  
GEMOLOGICAL  
INSTITUTE**

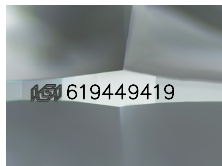
619449419



February 13, 2024  
IGI Report Number 619449419  
NATURAL DIAMOND  
ROUND BRILLIANT  
4.37 - 4.41 x 2.67 mm  
Carat Weight 0.31 CARAT  
Color Grade H  
Clarity Grade SI 2  
Cut Grade EXCELLENT  
Polish EXCELLENT  
Symmetry EXCELLENT  
Fluorescence NONE  
Inscription(s) IGI 619449419

**DIAMOND REPORT**

**ELECTRONIC COPY**



IGI 619449419

Sample Image Used

February 13, 2024

IGI Report Number

619449419

Description

NATURAL DIAMOND

Shape and Cutting Style

ROUND BRILLIANT

Measurements

4.37 - 4.41 x 2.67 mm

**GRADING RESULTS**

Carat Weight

0.31 CARAT

Color Grade

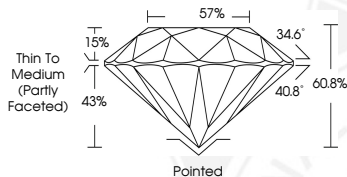
H

Clarity Grade

SI 2

Cut Grade

EXCELLENT



**ADDITIONAL GRADING INFORMATION**

Polish

EXCELLENT

Symmetry

EXCELLENT

Fluorescence

NONE

Identification Features

FEATHER

Inscription(s)

IGI 619449419

**COLOR**

D - F	G - J	K - M	N - R	S - Z	FANCY
Colorless	Near Colorless	Slightly Tinted	Very Light Color	Light Color	

**CLARITY**

IF	VS <sup>1-2</sup>	VS <sup>1-2</sup>	SI <sup>1-2</sup>	I <sup>1-2</sup>
Internally Flawless	Very Very Slightly Included	Very Slightly Included	Slightly Included	Included

© IGI 2020, International Gemological Institute

FD - 10 20



February 13, 2024  
IGI Report Number 619449419  
NATURAL DIAMOND  
ROUND BRILLIANT  
4.37 - 4.41 x 2.67 mm  
Carat Weight 0.31 CARAT  
Color Grade H  
Clarity Grade SI 2  
Cut Grade EXCELLENT  
Polish EXCELLENT  
Symmetry EXCELLENT  
Fluorescence NONE  
Inscription(s) IGI 619449419

THIS DOCUMENT WAS PRODUCED WITH THE FOLLOWING SECURITY MEASURES: SPECIAL DOCUMENT PAPER, INK SCREENS, WATERMARK BACKGROUND DESIGNS, HOLOGRAM AND OTHER SECURITY FEATURES NOT LISTED AND DO EXCEED DOCUMENT SECURITY INDUSTRY GUIDELINES.