

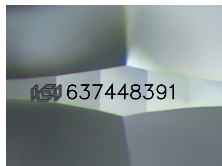


**INTERNATIONAL
GEMOLOGICAL
INSTITUTE**

DIAMOND REPORT

ELECTRONIC COPY

637448391



Sample Image Used



July 11, 2024
IGI Report Number 637448391
NATURAL DIAMOND
ROUND BRILLIANT
5.22 - 5.25 x 3.28 mm
Carat Weight 0.55 CARAT
Color Grade E
Clarity Grade SI 1
Cut Grade EXCELLENT
Polish EXCELLENT
Symmetry EXCELLENT
Fluorescence SLIGHT
Inscription(s) IGI 637448391

July 11, 2024

IGI Report Number 637448391

Description NATURAL DIAMOND

Shape and Cutting Style ROUND BRILLIANT

Measurements 5.22 - 5.25 x 3.28 mm

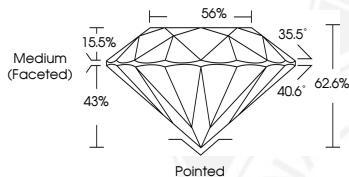
GRADING RESULTS

Carat Weight 0.55 CARAT

Color Grade E

Clarity Grade SI 1

Cut Grade EXCELLENT



ADDITIONAL GRADING INFORMATION

Polish EXCELLENT

Symmetry EXCELLENT

Fluorescence SLIGHT

Identification Features FEATHER, CLOUD

Inscription(s) IGI 637448391

COLOR

D - F	G - J	K - M	N - R	S - Z	FANCY
Colorless	Near Colorless	Slightly Tinted	Very Light Color	Light Color	

CLARITY

IF	VVS ¹⁻²	VS ¹⁻²	SI ¹⁻²	I ¹⁻²
Internally Flawless	Very Very Slightly Included	Very Slightly Included	Slightly Included	Included



July 11, 2024
IGI Report Number 637448391
NATURAL DIAMOND
ROUND BRILLIANT
5.22 - 5.25 x 3.28 mm
Carat Weight 0.55 CARAT
Color Grade E
Clarity Grade SI 1
Cut Grade EXCELLENT
Polish EXCELLENT
Symmetry EXCELLENT
Fluorescence SLIGHT
Inscription(s) IGI 637448391



© IGI 2020, International Gemological Institute

FD - 10 20

THIS DOCUMENT WAS PRODUCED WITH THE FOLLOWING SECURITY MEASURES: SPECIAL DOCUMENT PAPER, INK SCREENS, WATERMARK BACKGROUND DESIGNS, HOLOGRAM AND OTHER SECURITY FEATURES NOT LISTED AND DO EXCEED DOCUMENT SECURITY INDUSTRY GUIDELINES.