



**INTERNATIONAL  
GEMOLOGICAL  
INSTITUTE**

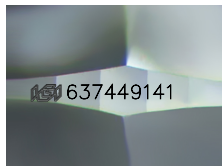
637449141



July 29, 2024  
IGI Report Number 637449141  
NATURAL DIAMOND  
ROUND BRILLIANT  
3.89 - 3.90 x 2.43 mm  
Carat Weight 0.23 CARAT  
Color Grade E  
Clarity Grade INTERNALLY  
FLAWLESS  
Cut Grade EXCELLENT  
Polish EXCELLENT  
Symmetry EXCELLENT  
Fluorescence NONE  
Inscription(s) IGI 637449141

**DIAMOND REPORT**

**ELECTRONIC COPY**

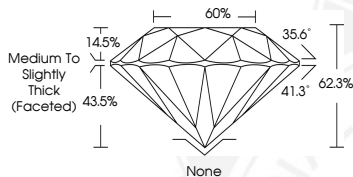


Sample Image Used

July 29, 2024  
IGI Report Number 637449141  
Description NATURAL DIAMOND  
Shape and Cutting Style ROUND BRILLIANT  
Measurements 3.89 - 3.90 x 2.43 mm

**GRADING RESULTS**

Carat Weight 0.23 CARAT  
Color Grade E  
Clarity Grade INTERNALLY FLAWLESS  
Cut Grade EXCELLENT



**ADDITIONAL GRADING INFORMATION**

Polish EXCELLENT  
Symmetry EXCELLENT  
Fluorescence NONE  
Inscription(s) IGI 637449141



July 29, 2024  
IGI Report Number 637449141  
NATURAL DIAMOND  
ROUND BRILLIANT  
3.89 - 3.90 x 2.43 mm  
Carat Weight 0.23 CARAT  
Color Grade E  
Clarity Grade INTERNALLY  
FLAWLESS  
Cut Grade EXCELLENT  
Polish EXCELLENT  
Symmetry EXCELLENT  
Fluorescence NONE  
Inscription(s) IGI 637449141

**COLOR**

D - F	G - J	K - M	N - R	S - Z	FANCY
Colorless	Near Colorless	Slightly Tinted	Very Light Color	Light Color	

**CLARITY**

IF	VVS <sup>1-2</sup>	VS <sup>1-2</sup>	SI <sup>1-2</sup>	I <sup>1-2</sup>
Internally Flawless	Very Very Slightly Included	Very Slightly Included	Slightly Included	Included



© IGI 2020, International Gemological Institute

FD - 10 20

THIS DOCUMENT WAS PRODUCED WITH THE FOLLOWING SECURITY MEASURES: SPECIAL DOCUMENT PAPER, INK SCREENS, WATERMARK BACKGROUND DESIGNS, HOLOGRAM AND OTHER SECURITY FEATURES NOT LISTED AND DO EXCEED DOCUMENT SECURITY INDUSTRY GUIDELINES.