



**INTERNATIONAL
GEMOLOGICAL
INSTITUTE**

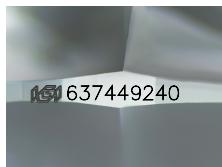
637449240



July 3, 2024
IGI Report Number 637449240
NATURAL DIAMOND
ROUND BRILLIANT
3.89 - 3.93 x 2.42 mm
Carat Weight 0.23 CARAT
Color Grade D
Clarity Grade INTERNALLY
FLAWLESS
Cut Grade EXCELLENT
Polish EXCELLENT
Symmetry EXCELLENT
Fluorescence NONE
Inscription(s) IGI 637449240

DIAMOND REPORT

ELECTRONIC COPY



Sample Image Used

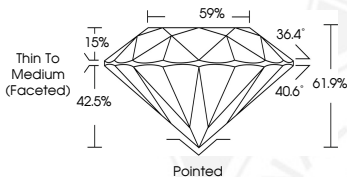
July 3, 2024
IGI Report Number 637449240
Description NATURAL DIAMOND
Shape and Cutting Style ROUND BRILLIANT
Measurements 3.89 - 3.93 x 2.42 mm

GRADING RESULTS

Carat Weight 0.23 CARAT
Color Grade D
Clarity Grade INTERNALLY FLAWLESS
Cut Grade EXCELLENT

ADDITIONAL GRADING INFORMATION

Polish EXCELLENT
Symmetry EXCELLENT
Fluorescence NONE
Inscription(s) IGI 637449240



COLOR

D - F	G - J	K - M	N - R	S - Z	FANCY
Colorless	Near Colorless	Slightly Tinted	Very Light Color	Light Color	

CLARITY

IF	VVS ¹⁻²	VS ¹⁻²	SI ¹⁻²	I ¹⁻²
Internally Flawless	Very Very Slightly Included	Very Slightly Included	Slightly Included	Included



July 3, 2024
IGI Report Number 637449240
NATURAL DIAMOND
ROUND BRILLIANT
3.89 - 3.93 x 2.42 mm
Carat Weight 0.23 CARAT
Color Grade D
Clarity Grade INTERNALLY
FLAWLESS
Cut Grade EXCELLENT
Polish EXCELLENT
Symmetry EXCELLENT
Fluorescence NONE
Inscription(s) IGI 637449240



© IGI 2020, International Gemological Institute

FD - 10 20

THIS DOCUMENT WAS PRODUCED WITH THE FOLLOWING SECURITY MEASURES: SPECIAL DOCUMENT PAPER, INK SCREENS, WATERMARK BACKGROUND DESIGNS, HOLOGRAM AND OTHER SECURITY FEATURES NOT LISTED AND DO EXCEED DOCUMENT SECURITY INDUSTRY GUIDELINES.