



**ELECTRONIC COPY**

## DIAMOND REPORT

January 7, 2025	
IGI Report Number	667428916
Description	NATURAL DIAMOND
Shape and Cutting Style	ROUND BRILLIANT
Measurements	7.58 - 7.63 X 4.79 MM

## GRADING RESULTS

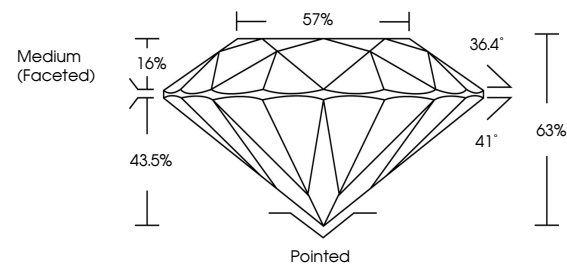
Carat Weight	1.72 CARAT
Color Grade	G
Clarity Grade	VS 2
Cut Grade	EXCELLENT

### ADDITIONAL GRADING INFORMATION

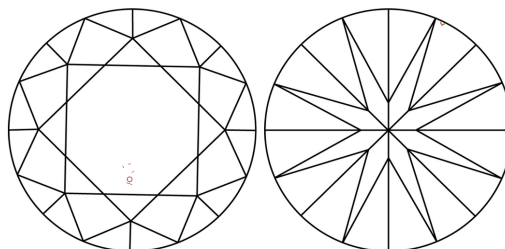
Polish	EXCELLENT
Symmetry	EXCELLENT
Fluorescence	NONE
Inscription(s)	131 667428916

667428916  
Report verification at [igi.org](https://igi.org)

## PROPORTIONS

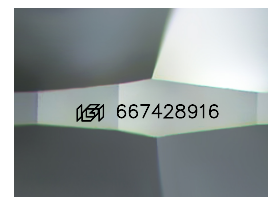


## CLARITY CHARACTERISTICS



## KEY TO SYMBOLS

Red symbols indicate internal characteristics.  
Green symbols indicate external characteristics.



Sample Image Used

**COLOR**

D - F	G - J	K - M	N - R	S - Z	FANCY
Colorless	Near Colorless	Slightly Tinted	Very Light Color	Light Color	

## CLARITY

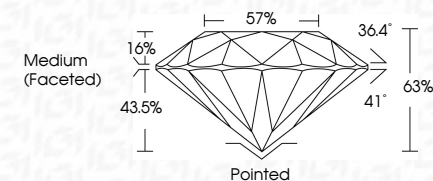
IF	VVS <sup>1-2</sup>	VS <sup>1-2</sup>	SI <sup>1-2</sup>	I <sup>1-3</sup>
Internally Flawless	Very Very Slightly Included	Very Slightly Included	Slightly Included	Included



January 7, 2025	
IGI Report Number	667428916
Description	NATURAL DIAMOND
Shape and Cutting Style	ROUND BRILLIANT
Measurements	7.58 - 7.63 X 4.79 MM

## GRADING RESULTS

Carat Weight	1.72 CARAT
Color Grade	G
Clarity Grade	VS 2
Cut Grade	EXCELLENT



### ADDITIONAL GRADING INFORMATION

Polish	EXCELLENT
Symmetry	EXCELLENT
Fluorescence	NONE
Inscription(s)	1561 667428916



© IGI 2020, International Gemological Institute

FD - 10 20



THIS DOCUMENT WAS PRODUCED WITH THE FOLLOWING SECURITY MEASURES: SPECIAL DOCUMENT PAPER, INK SCREENS, WATERMARK, BACKGROUND DESIGNS, HOLOGRAM AND OTHER SECURITY FEATURES NOT LISTED AND DO EXCEED DOCUMENT SECURITY INDUSTRY GUIDELINES

**www.igi.org**

January 7, 2025  
GI Report No 667428916  
POIND BRILLIANT

GI Report No 667428916  
ROUND BRILLIANT  
7.58 - 7.63 X 4.79 MM

7.58 - 7.63 X 4.79 MM	1.72 CARAT
Carat Weight	
Color Grade	G

Clarity Grade	VS 2
Cut Grade	EXCELLENT

Cut Grade	EXCELLENT
Depth	63%
Table	57%

Girdle

	Pointed	EXCELLENT
Culet		
Polish		

Symmetry	EXCELLENT
Fluorescence	NONE
Excitation(e)	450 667 408016

☎ 667428916