



**INTERNATIONAL  
GEMOLOGICAL  
INSTITUTE**

**DIAMOND REPORT**

January 10, 2025  
 IGI Report Number **668416452**  
 Description **NATURAL DIAMOND**  
 Shape and Cutting Style **ROUND BRILLIANT**  
 Measurements **4.37 - 4.40 X 2.71 MM**

**GRADING RESULTS**

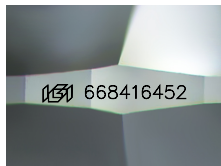
Carat Weight **0.32 CARAT**  
 Color Grade **H**  
 Clarity Grade **VS 1**  
 Cut Grade **EXCELLENT**

**ADDITIONAL GRADING INFORMATION**

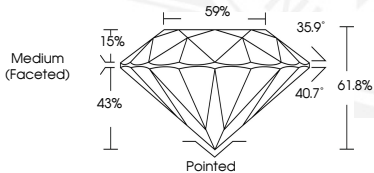
Polish **EXCELLENT**  
 Symmetry **EXCELLENT**  
 Fluorescence **SLIGHT**  
 Identification Features **FEATHER**  
 Inscription(s) **IGI 668416452**  
 Comments: IDEAL CUT ROUND BRILLIANT

**ELECTRONIC COPY**

**668416452**



Sample Image Used



January 10, 2025  
 IGI Report Number **668416452**  
 ROUND BRILLIANT  
 NATURAL DIAMOND  
 4.37 - 4.40 X 2.71 MM  
 Carat Weight **0.32 CARAT**  
 Color Grade **H**  
 Clarity Grade **VS 1**  
 Cut Grade **EXCELLENT**  
 Polish **EXCELLENT**  
 Symmetry **EXCELLENT**  
 Fluorescence **SLIGHT**  
 Inscription(s) **IGI 668416452**  
 Comments: IDEAL CUT ROUND BRILLIANT



January 10, 2025  
 IGI Report Number **668416452**  
 ROUND BRILLIANT  
 NATURAL DIAMOND  
 4.37 - 4.40 X 2.71 MM  
 Carat Weight **0.32 CARAT**  
 Color Grade **H**  
 Clarity Grade **VS 1**  
 Cut Grade **EXCELLENT**  
 Polish **EXCELLENT**  
 Symmetry **EXCELLENT**  
 Fluorescence **SLIGHT**  
 Inscription(s) **IGI 668416452**  
 Comments: IDEAL CUT ROUND BRILLIANT

THIS DOCUMENT WAS PRODUCED WITH THE FOLLOWING SECURITY MEASURES: SPECIAL DOCUMENT PAPER, INK SCREENS, WATERMARK, BACKGROUND DESIGN, HOLOGRAM AND OTHER SECURITY FEATURES NOT LISTED AND DO EXCEED DOCUMENT SECURITY INDUSTRY GUIDELINES.

For terms & conditions and to verify this report, please visit [www.igi.org](http://www.igi.org)