



**INTERNATIONAL
GEMOLOGICAL
INSTITUTE**

DIAMOND REPORT

January 14, 2025
 IGI Report Number **668425654**
 Description **NATURAL DIAMOND**
 Shape and Cutting Style **ROUND BRILLIANT**
 Measurements **4.51 - 4.55 X 2.81 MM**

GRADING RESULTS

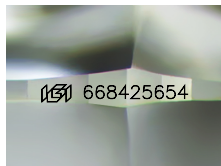
Carat Weight **0.36 CARAT**
 Color Grade **E**
 Clarity Grade **INTERNALLY FLAWLESS**
 Cut Grade **EXCELLENT**

ADDITIONAL GRADING INFORMATION

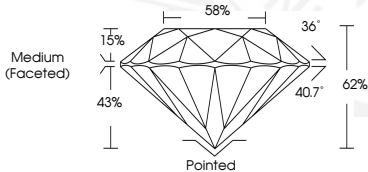
Polish **EXCELLENT**
 Symmetry **EXCELLENT**
 Fluorescence **VERY SLIGHT**
 Inscription(s) **IGI 668425654**
 Comments: IDEAL CUT ROUND BRILLIANT

ELECTRONIC COPY

668425654



Sample Image Used



January 14, 2025
 IGI Report Number **668425654**
 ROUND BRILLIANT
 NATURAL DIAMOND
 4.51 - 4.55 X 2.81 MM
 Carat Weight **0.36 CARAT**
 Color Grade **E**
 Clarity Grade **I.F.**
 Cut Grade **EXCELLENT**
 Polish **EXCELLENT**
 Symmetry **EXCELLENT**
 Fluorescence **VERY SLIGHT**
 Inscription(s) **IGI 668425654**
 Comments: IDEAL CUT ROUND BRILLIANT



January 14, 2025
 IGI Report Number **668425654**
 ROUND BRILLIANT
 NATURAL DIAMOND
 4.51 - 4.55 X 2.81 MM
 Carat Weight **0.36 CARAT**
 Color Grade **E**
 Clarity Grade **I.F.**
 Cut Grade **EXCELLENT**
 Polish **EXCELLENT**
 Symmetry **EXCELLENT**
 Fluorescence **VERY SLIGHT**
 Inscription(s) **IGI 668425654**
 Comments: IDEAL CUT ROUND BRILLIANT



THIS DOCUMENT WAS PRODUCED WITH THE FOLLOWING SECURITY MEASURES: SPECIAL DOCUMENT PAPER, INK SCREENS, WATERMARK, BACKGROUND DESIGN, HOLOGRAM AND OTHER SECURITY FEATURES NOT LISTED AND DO EXCEED DOCUMENT SECURITY INDUSTRY GUIDELINES.

For terms & conditions and to verify this report, please visit www.igi.org