



**INTERNATIONAL
GEMOLOGICAL
INSTITUTE**

DIAMOND REPORT

January 15, 2025
 IGI Report Number **668427401**
 Description **NATURAL DIAMOND**
 Shape and Cutting Style **ROUND BRILLIANT**
 Measurements **4.68 - 4.71 X 2.94 MM**

GRADING RESULTS

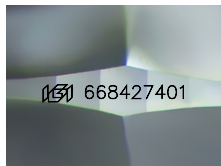
Carat Weight **0.40 CARAT**
 Color Grade **D**
 Clarity Grade **VVS 2**
 Cut Grade **EXCELLENT**

ADDITIONAL GRADING INFORMATION

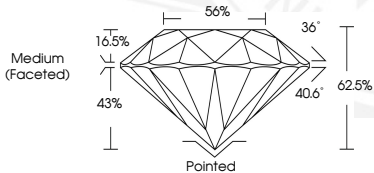
Polish **EXCELLENT**
 Symmetry **EXCELLENT**
 Fluorescence **VERY SLIGHT**
 Identification Features **PINPOINT, CLOUD**
 Inscription(s) **IGI 668427401**
 Comments: IDEAL CUT ROUND BRILLIANT

ELECTRONIC COPY

668427401



Sample Image Used



January 15, 2025
 IGI Report Number **668427401**
 ROUND BRILLIANT
 NATURAL DIAMOND
 4.68 - 4.71 X 2.94 MM
 Carat Weight **0.40 CARAT**
 Color Grade **D**
 Clarity Grade **VVS 2**
 Cut Grade **EXCELLENT**
 Polish **EXCELLENT**
 Symmetry **EXCELLENT**
 Fluorescence **VERY SLIGHT**
 Inscription(s) **IGI 668427401**
 Comments: IDEAL CUT ROUND BRILLIANT



January 15, 2025
 IGI Report Number **668427401**
 ROUND BRILLIANT
 NATURAL DIAMOND
 4.68 - 4.71 X 2.94 MM
 Carat Weight **0.40 CARAT**
 Color Grade **D**
 Clarity Grade **VVS 2**
 Cut Grade **EXCELLENT**
 Polish **EXCELLENT**
 Symmetry **EXCELLENT**
 Fluorescence **VERY SLIGHT**
 Inscription(s) **IGI 668427401**
 Comments: IDEAL CUT ROUND BRILLIANT

THIS DOCUMENT WAS PRODUCED WITH THE FOLLOWING SECURITY MEASURES: SPECIAL DOCUMENT PAPER, INK SCREENS, WATERMARK, BACKGROUND DESIGN, HOLOGRAM AND OTHER SECURITY FEATURES NOT LISTED AND DO EXCEED DOCUMENT SECURITY INDUSTRY GUIDELINES.

For terms & conditions and to verify this report, please visit www.igi.org