



**INTERNATIONAL  
GEMOLOGICAL  
INSTITUTE**

**ELECTRONIC COPY**

**668445121**



January 10, 2025  
**IGI Report Number 668445121**  
**ROUND BRILLIANT**  
**NATURAL DIAMOND**  
**4.62 - 4.67 X 2.93 MM**  
 Carat Weight **0.40 CARAT**  
 Color Grade **H**  
 Clarity Grade **VVS 1**  
 Cut Grade **EXCELLENT**  
 Polish **EXCELLENT**  
 Symmetry **EXCELLENT**  
 Fluorescence **NONE**  
 Inscription(s) **IGI 668445121**

**DIAMOND REPORT**

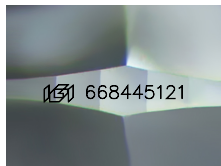
January 10, 2025  
 IGI Report Number **668445121**  
 Description **NATURAL DIAMOND**  
 Shape and Cutting Style **ROUND BRILLIANT**  
 Measurements **4.62 - 4.67 X 2.93 MM**

**GRADING RESULTS**

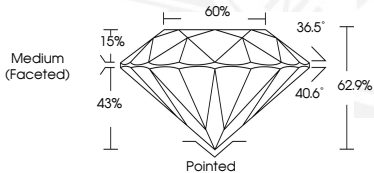
Carat Weight **0.40 CARAT**  
 Color Grade **H**  
 Clarity Grade **VVS 1**  
 Cut Grade **EXCELLENT**

**ADDITIONAL GRADING INFORMATION**

Polish **EXCELLENT**  
 Symmetry **EXCELLENT**  
 Fluorescence **NONE**  
 Identification Features **CLOUD**  
 Inscription(s) **IGI 668445121**



Sample Image Used



January 10, 2025  
**IGI Report Number 668445121**  
**ROUND BRILLIANT**  
**NATURAL DIAMOND**  
**4.62 - 4.67 X 2.93 MM**  
 Carat Weight **0.40 CARAT**  
 Color Grade **H**  
 Clarity Grade **VVS 1**  
 Cut Grade **EXCELLENT**  
 Polish **EXCELLENT**  
 Symmetry **EXCELLENT**  
 Fluorescence **NONE**  
 Inscription(s) **IGI 668445121**



THIS DOCUMENT WAS PRODUCED WITH THE FOLLOWING SECURITY MEASURES: SPECIAL DOCUMENT PAPER, INK SCREENS, WATERMARK, BACKGROUND DESIGN, HOLOGRAM AND OTHER SECURITY FEATURES NOT LISTED AND DO EXCEED DOCUMENT SECURITY INDUSTRY GUIDELINES.

For terms & conditions and to verify this report, please visit [www.igi.org](http://www.igi.org)