



**INTERNATIONAL
GEMOLOGICAL
INSTITUTE**

DIAMOND REPORT

February 27, 2025
 IGI Report Number **678561459**
 Description **NATURAL DIAMOND**
 Shape and Cutting Style **ROUND BRILLIANT**
 Measurements **4.44 - 4.47 X 2.65 MM**

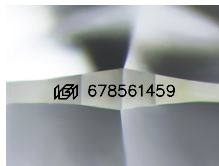
GRADING RESULTS

Carat Weight **0.32 CARAT**
 Color Grade **H**
 Clarity Grade **VS 1**
 Cut Grade **EXCELLENT**

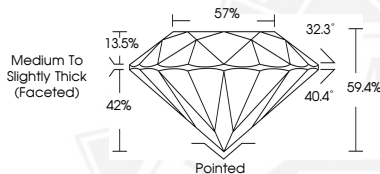
ADDITIONAL GRADING INFORMATION

Polish **EXCELLENT**
 Symmetry **EXCELLENT**
 Fluorescence **NONE**
 Identification Features **FEATHER, CLOUD**
 Inscription(s) **IGI 678561459**

ELECTRONIC COPY



Sample Image Used



February 27, 2025
 IGI Report Number **678561459**
 ROUND BRILLIANT
 NATURAL DIAMOND
 4.44 - 4.47 X 2.65 MM
 Carat Weight **0.32 CARAT**
 Color Grade **H**
 Clarity Grade **VS 1**
 Cut Grade **EXCELLENT**
 Polish **EXCELLENT**
 Symmetry **EXCELLENT**
 Fluorescence **NONE**
 Inscription(s) **IGI 678561459**



February 27, 2025
 IGI Report Number **678561459**
 ROUND BRILLIANT
 NATURAL DIAMOND
 4.44 - 4.47 X 2.65 MM
 Carat Weight **0.32 CARAT**
 Color Grade **H**
 Clarity Grade **VS 1**
 Cut Grade **EXCELLENT**
 Polish **EXCELLENT**
 Symmetry **EXCELLENT**
 Fluorescence **NONE**
 Inscription(s) **IGI 678561459**



THIS DOCUMENT WAS PRODUCED WITH THE FOLLOWING SECURITY MEASURES: SPECIAL DOCUMENT PAPER, INK SCREENS, WATERMARK, BACKGROUND DESIGN, HOLOGRAM AND OTHER SECURITY FEATURES NOT LISTED AND DO EXCEED DOCUMENT SECURITY INDUSTRY GUIDELINES.

For terms & conditions and to verify this report, please visit www.igi.org