



# INTERNATIONAL GEMOLOGICAL INSTITUTE

**ELECTRONIC COPY**

**680578242**



February 27, 2025  
 IGI Report Number **680578242**  
**ROUND BRILLIANT**  
**NATURAL DIAMOND**  
**5.60 - 5.65 X 3.54 MM**  
 Carat Weight **0.70 CARAT**  
 Color Grade **E**  
 Clarity Grade **SI 1**  
 Cut Grade **EXCELLENT**  
 Polish **EXCELLENT**  
 Symmetry **EXCELLENT**  
 Fluorescence **SLIGHT**  
 Inscription(s) **IGI 680578242**

## DIAMOND REPORT

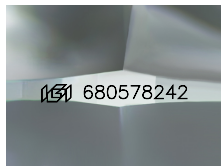
February 27, 2025  
 IGI Report Number **680578242**  
 Description **NATURAL DIAMOND**  
 Shape and Cutting Style **ROUND BRILLIANT**  
 Measurements **5.60 - 5.65 X 3.54 MM**

## GRADING RESULTS

Carat Weight **0.70 CARAT**  
 Color Grade **E**  
 Clarity Grade **SI 1**  
 Cut Grade **EXCELLENT**

## ADDITIONAL GRADING INFORMATION

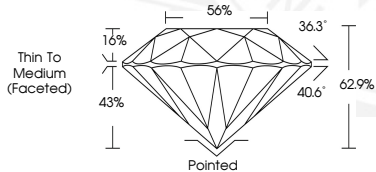
Polish **EXCELLENT**  
 Symmetry **EXCELLENT**  
 Fluorescence **SLIGHT**  
 Identification Features **CRYSTAL**  
 Inscription(s) **IGI 680578242**



Sample Image Used



February 27, 2025  
 IGI Report Number **680578242**  
**ROUND BRILLIANT**  
**NATURAL DIAMOND**  
**5.60 - 5.65 X 3.54 MM**  
 Carat Weight **0.70 CARAT**  
 Color Grade **E**  
 Clarity Grade **SI 1**  
 Cut Grade **EXCELLENT**  
 Polish **EXCELLENT**  
 Symmetry **EXCELLENT**  
 Fluorescence **SLIGHT**  
 Inscription(s) **IGI 680578242**



THIS DOCUMENT WAS PRODUCED WITH THE FOLLOWING SECURITY MEASURES: SPECIAL DOCUMENT PAPER, INK SCREENS, WATERMARK, BACKGROUND DESIGNS, HOLOGRAM AND OTHER SECURITY FEATURES NOT LISTED AND DO EXCEED DOCUMENT SECURITY INDUSTRY GUIDELINES.

For terms & conditions and to verify this report, please visit [www.igi.org](http://www.igi.org)