

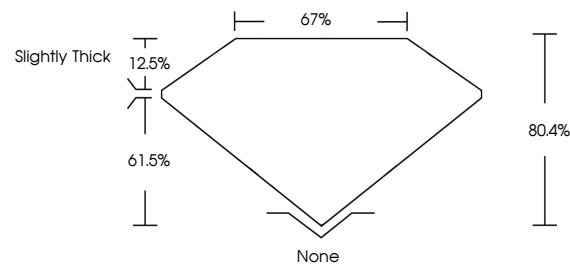


ELECTRONIC COPY

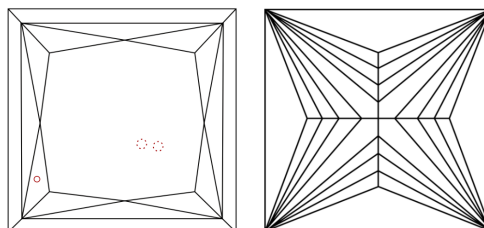
DIAMOND REPORT

681518031
Report verification at igi.org

PROPORTIONS



CLARITY CHARACTERISTICS



KEY TO SYMBOLS

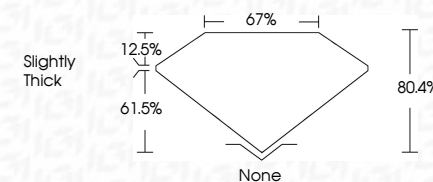
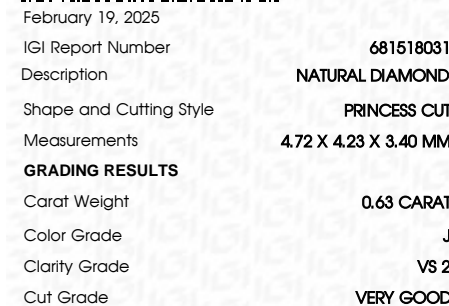
Red symbols indicate internal characteristics.
Green symbols indicate external characteristics.

COLOR

| D - F | G - J | K - M | N - R | S - Z | FANCY |
|-----------|----------------|-----------------|------------------|-------------|-------|
| Colorless | Near Colorless | Slightly Tinted | Very Light Color | Light Color | |

CLARITY

| IF | VVS ¹⁻² | VS ¹⁻² | SI ¹⁻² | I ¹⁻³ |
|---------------------|-----------------------------|------------------------|-------------------|------------------|
| Internally Flawless | Very Very Slightly Included | Very Slightly Included | Slightly Included | Included |



ADDITIONAL GRADING INFORMATION

| | |
|--------------|-------------|
| Polish | VERY GOOD |
| Symmetry | VERY GOOD |
| Fluorescence | VERY SLIGHT |



© IGI 2020, International Gemological Institute

FD - 10 20

www.igi.org

February 19, 2025
 GI Report No 681518031
 PRINCESS C/IT

| | |
|-----------------------|----------------|
| 4.72 X 4.28 X 3.40 MM | 0.68 CARAT |
| Carat Weight | J |
| Color Grade | V8.2 |
| Clarity Grade | VERY GOOD |
| Cut Grade | 80.4% |
| Depth | 67% |
| Table | Slightly Thick |
| Grade | |
| Quiet | None |
| Polish | VERY GOOD |
| Symmetry | VERY GOOD |
| Fluorescence | VERY SLIGHT |