



**INTERNATIONAL
GEMOLOGICAL
INSTITUTE**

DIAMOND REPORT

April 4, 2025
IGI Report Number **689537551**
Description **NATURAL DIAMOND**
Shape and Cutting Style **ROUND BRILLIANT**
Measurements **4.17 - 4.21 X 2.65 MM**

GRADING RESULTS

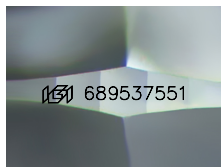
Carat Weight **0.29 CARAT**
Color Grade **E**
Clarity Grade **VS 2**
Cut Grade **EXCELLENT**

ADDITIONAL GRADING INFORMATION

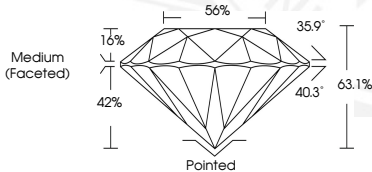
Polish **EXCELLENT**
Symmetry **EXCELLENT**
Fluorescence **SLIGHT**
Identification Features **CRYSTAL, FEATHER, CLOUD, KNOT**
Inscription(s) **IGI 689537551**

ELECTRONIC COPY

689537551



Sample Image Used



April 4, 2025
IGI Report Number **689537551**
ROUND BRILLIANT
NATURAL DIAMOND
4.17 - 4.21 X 2.65 MM
Carat Weight **0.29 CARAT**
Color Grade **E**
Clarity Grade **VS 2**
Cut Grade **EXCELLENT**
Polish **EXCELLENT**
Symmetry **EXCELLENT**
Fluorescence **SLIGHT**
Inscription(s) **IGI 689537551**



April 4, 2025
IGI Report Number **689537551**
ROUND BRILLIANT
NATURAL DIAMOND
4.17 - 4.21 X 2.65 MM
Carat Weight **0.29 CARAT**
Color Grade **E**
Clarity Grade **VS 2**
Cut Grade **EXCELLENT**
Polish **EXCELLENT**
Symmetry **EXCELLENT**
Fluorescence **SLIGHT**
Inscription(s) **IGI 689537551**

THIS DOCUMENT WAS PRODUCED WITH THE FOLLOWING SECURITY MEASURES: SPECIAL DOCUMENT PAPER, PINK SCREENS, WATERMARK, BACKGROUND DESIGN, HOLOGRAM AND OTHER SECURITY FEATURES NOT LISTED AND DO EXCEED DOCUMENT SECURITY INDUSTRY GUIDELINES.

For terms & conditions and to verify this report, please visit www.igi.org