



**INTERNATIONAL  
GEMOLOGICAL  
INSTITUTE**

**DIAMOND REPORT**

March 26, 2025  
IGI Report Number **691519188**  
Description **NATURAL DIAMOND**  
Shape and Cutting Style **ROUND BRILLIANT**  
Measurements **4.70 - 4.71 X 2.96 MM**

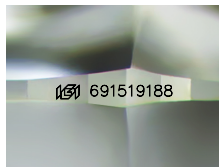
**GRADING RESULTS**

Carat Weight **0.40 CARAT**  
Color Grade **H**  
Clarity Grade **SI 1**  
Cut Grade **EXCELLENT**

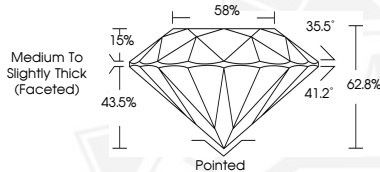
**ADDITIONAL GRADING INFORMATION**

Polish **EXCELLENT**  
Symmetry **EXCELLENT**  
Fluorescence **NONE**  
Identification Features **CLOUD, CRYSTAL**  
Inscription(s) **IGI 691519188**

**ELECTRONIC COPY**



Sample Image Used



March 26, 2025  
IGI Report Number **691519188**  
**ROUND BRILLIANT**  
**NATURAL DIAMOND**  
**4.70 - 4.71 X 2.96 MM**  
Carat Weight **0.40 CARAT**  
Color Grade **H**  
Clarity Grade **SI 1**  
Cut Grade **EXCELLENT**  
Polish **EXCELLENT**  
Symmetry **EXCELLENT**  
Fluorescence **NONE**  
Inscription(s) **IGI 691519188**



March 26, 2025  
IGI Report Number **691519188**  
**ROUND BRILLIANT**  
**NATURAL DIAMOND**  
**4.70 - 4.71 X 2.96 MM**  
Carat Weight **0.40 CARAT**  
Color Grade **H**  
Clarity Grade **SI 1**  
Cut Grade **EXCELLENT**  
Polish **EXCELLENT**  
Symmetry **EXCELLENT**  
Fluorescence **NONE**  
Inscription(s) **IGI 691519188**

THIS DOCUMENT WAS PRODUCED WITH THE FOLLOWING SECURITY MEASURES: SPECIAL DOCUMENT PAPER, INK SCREENS, WATERMARK, BACKGROUND DESIGN, HOLOGRAM AND OTHER SECURITY FEATURES NOT LISTED AND DO EXCEED DOCUMENT SECURITY INDUSTRY GUIDELINES.

For terms & conditions and to verify this report, please visit [www.igi.org](http://www.igi.org)