



**INTERNATIONAL  
GEMOLOGICAL  
INSTITUTE**

**DIAMOND REPORT**

April 7, 2025  
IGI Report Number **691573035**  
Description **NATURAL DIAMOND**  
Shape and Cutting Style **ROUND BRILLIANT**  
Measurements **4.74 - 4.77 X 2.91 MM**

**GRADING RESULTS**

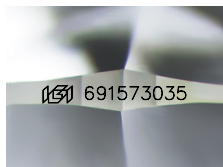
Carat Weight **0.40 CARAT**  
Color Grade **F**  
Clarity Grade **SI 2**  
Cut Grade **EXCELLENT**

**ADDITIONAL GRADING INFORMATION**

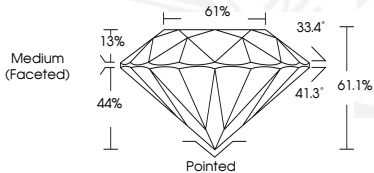
Polish **EXCELLENT**  
Symmetry **EXCELLENT**  
Fluorescence **NONE**  
Identification Features **CRYSTAL CLOUD**  
Inscription(s) **IGI 691573035**

**ELECTRONIC COPY**

**691573035**



Sample Image Used



April 7, 2025  
IGI Report Number **691573035**  
**ROUND BRILLIANT**  
**NATURAL DIAMOND**  
**4.74 - 4.77 X 2.91 MM**  
Carat Weight **0.40 CARAT**  
Color Grade **F**  
Clarity Grade **SI 2**  
Cut Grade **EXCELLENT**  
Polish **EXCELLENT**  
Symmetry **EXCELLENT**  
Fluorescence **NONE**  
Inscription(s) **IGI 691573035**



April 7, 2025  
IGI Report Number **691573035**  
**ROUND BRILLIANT**  
**NATURAL DIAMOND**  
**4.74 - 4.77 X 2.91 MM**  
Carat Weight **0.40 CARAT**  
Color Grade **F**  
Clarity Grade **SI 2**  
Cut Grade **EXCELLENT**  
Polish **EXCELLENT**  
Symmetry **EXCELLENT**  
Fluorescence **NONE**  
Inscription(s) **IGI 691573035**

THIS DOCUMENT WAS PRODUCED WITH THE FOLLOWING SECURITY MEASURES: SPECIAL DOCUMENT PAPER, INK SCREENS, WATERMARK, BACKGROUND DESIGN, HOLOGRAM AND OTHER SECURITY FEATURES NOT LISTED AND DO EXCEED DOCUMENT SECURITY INDUSTRY GUIDELINES.

For terms & conditions and to verify this report, please visit [www.igi.org](http://www.igi.org)