



**INTERNATIONAL  
GEMOLOGICAL  
INSTITUTE**

**DIAMOND REPORT**

May 20, 2025  
 IGI Report Number **692523164**  
 Description **NATURAL DIAMOND**  
 Shape and Cutting Style **ROUND BRILLIANT**  
 Measurements **6.17 - 6.21 X 3.84 MM**

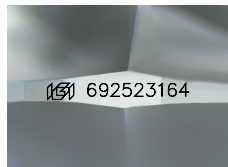
**GRADING RESULTS**

Carat Weight **0.90 CARAT**  
 Color Grade **F**  
 Clarity Grade **VVS 2**  
 Cut Grade **EXCELLENT**

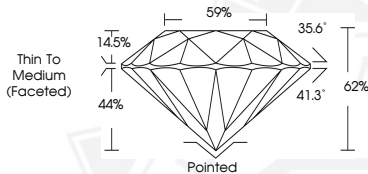
**ADDITIONAL GRADING INFORMATION**

Polish **EXCELLENT**  
 Symmetry **EXCELLENT**  
 Fluorescence **VERY SLIGHT**  
 Identification Features **FEATHER**  
 Inscription(s) **IGI 692523164**  
 Comments: IDEAL CUT ROUND BRILLIANT

**ELECTRONIC COPY**



Sample Image Used



May 20, 2025  
 IGI Report Number **692523164**  
 ROUND BRILLIANT  
 NATURAL DIAMOND  
 6.17 - 6.21 X 3.84 MM  
 Carat Weight **0.90 CARAT**  
 Color Grade **F**  
 Clarity Grade **VVS 2**  
 Cut Grade **EXCELLENT**  
 Polish **EXCELLENT**  
 Symmetry **EXCELLENT**  
 Fluorescence **VERY SLIGHT**  
 Inscription(s) **IGI 692523164**  
 Comments: IDEAL CUT ROUND BRILLIANT



May 20, 2025  
 IGI Report Number **692523164**  
 ROUND BRILLIANT  
 NATURAL DIAMOND  
 6.17 - 6.21 X 3.84 MM  
 Carat Weight **0.90 CARAT**  
 Color Grade **F**  
 Clarity Grade **VVS 2**  
 Cut Grade **EXCELLENT**  
 Polish **EXCELLENT**  
 Symmetry **EXCELLENT**  
 Fluorescence **VERY SLIGHT**  
 Inscription(s) **IGI 692523164**  
 Comments: IDEAL CUT ROUND BRILLIANT



THIS DOCUMENT WAS PRODUCED WITH THE FOLLOWING SECURITY MEASURES: SPECIAL DOCUMENT PAPER, INK SCREENS, WATERMARK, BACKGROUND DESIGN, HOLOGRAM AND OTHER SECURITY FEATURES NOT LISTED AND DO EXCEED DOCUMENT SECURITY INDUSTRY GUIDELINES.

For terms & conditions and to verify this report, please visit [www.igi.org](http://www.igi.org)