



# INTERNATIONAL GEMOLOGICAL INSTITUTE

## DIAMOND REPORT

April 29, 2025  
 IGI Report Number **693533328**  
 Description **NATURAL DIAMOND**  
 Shape and Cutting Style **ROUND BRILLIANT**  
 Measurements **4.70 - 4.73 X 2.98 MM**

### GRADING RESULTS

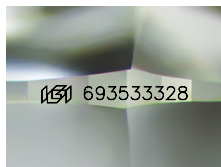
Carat Weight **0.41 CARAT**  
 Color Grade **G**  
 Clarity Grade **SI 1**  
 Cut Grade **EXCELLENT**

### ADDITIONAL GRADING INFORMATION

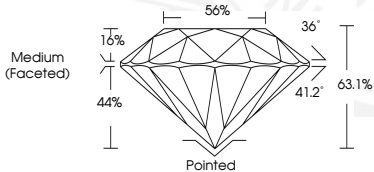
Polish **EXCELLENT**  
 Symmetry **EXCELLENT**  
 Fluorescence **NONE**  
 Identification Features **CRYSTAL, TWINNING**  
 Inscription(s) **IGI 693533328**

ELECTRONIC COPY

693533328



Sample Image Used



April 29, 2025  
 IGI Report Number **693533328**  
 ROUND BRILLIANT  
 NATURAL DIAMOND  
 4.70 - 4.73 X 2.98 MM  
 Carat Weight **0.41 CARAT**  
 Color Grade **G**  
 Clarity Grade **SI 1**  
 Cut Grade **EXCELLENT**  
 Polish **EXCELLENT**  
 Symmetry **EXCELLENT**  
 Fluorescence **NONE**  
 Inscription(s) **IGI 693533328**



April 29, 2025  
 IGI Report Number **693533328**  
 ROUND BRILLIANT  
 NATURAL DIAMOND  
 4.70 - 4.73 X 2.98 MM  
 Carat Weight **0.41 CARAT**  
 Color Grade **G**  
 Clarity Grade **SI 1**  
 Cut Grade **EXCELLENT**  
 Polish **EXCELLENT**  
 Symmetry **EXCELLENT**  
 Fluorescence **NONE**  
 Inscription(s) **IGI 693533328**

THIS DOCUMENT WAS PRODUCED WITH THE FOLLOWING SECURITY MEASURES: SPECIAL DOCUMENT PAPER, INK SCREENS, WATERMARK, BACKGROUND DESIGN, HOLOGRAM AND OTHER SECURITY FEATURES NOT LISTED AND DO EXCEED DOCUMENT SECURITY INDUSTRY GUIDELINES.

For terms & conditions and to verify this report, please visit [www.igi.org](http://www.igi.org)