



**INTERNATIONAL  
GEMOLOGICAL  
INSTITUTE**

**ELECTRONIC COPY**

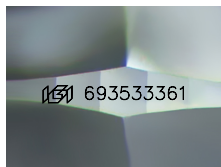
**693533361**



April 29, 2025  
IGI Report Number 693533361  
ROUND BRILLIANT  
NATURAL DIAMOND  
5.12 - 5.14 X 3.15 MM  
Carat Weight 0.51 CARAT  
Color Grade E  
Clarity Grade VS 2  
Cut Grade EXCELLENT  
Polish EXCELLENT  
Symmetry EXCELLENT  
Fluorescence NONE  
Inscription(s) IGI 693533361

**DIAMOND REPORT**

April 29, 2025  
IGI Report Number 693533361  
Description NATURAL DIAMOND  
Shape and Cutting Style ROUND BRILLIANT  
Measurements 5.12 - 5.14 X 3.15 MM



Sample Image Used

**GRADING RESULTS**

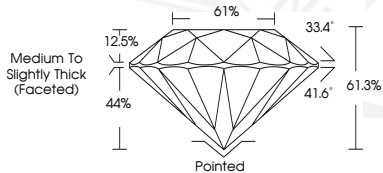
Carat Weight 0.51 CARAT  
Color Grade E  
Clarity Grade VS 2  
Cut Grade EXCELLENT

**ADDITIONAL GRADING INFORMATION**

Polish EXCELLENT  
Symmetry EXCELLENT  
Fluorescence NONE  
Identification Features CRYSTAL CLOUD  
Inscription(s) IGI 693533361



April 29, 2025  
IGI Report Number 693533361  
ROUND BRILLIANT  
NATURAL DIAMOND  
5.12 - 5.14 X 3.15 MM  
Carat Weight 0.51 CARAT  
Color Grade E  
Clarity Grade VS 2  
Cut Grade EXCELLENT  
Polish EXCELLENT  
Symmetry EXCELLENT  
Fluorescence NONE  
Inscription(s) IGI 693533361



THIS DOCUMENT WAS PRODUCED WITH THE FOLLOWING SECURITY MEASURES: SPECIAL DOCUMENT PAPER, INK SCREENS, WATERMARK, BACKGROUND DESIGN, HOLOGRAM AND OTHER SECURITY FEATURES NOT LISTED AND DO EXCEED DOCUMENT SECURITY INDUSTRY GUIDELINES.

For terms & conditions and to verify this report, please visit [www.igi.org](http://www.igi.org)