



# INTERNATIONAL GEMOLOGICAL INSTITUTE

## DIAMOND REPORT

April 24, 2025  
 IGI Report Number **694519705**  
 Description **NATURAL DIAMOND**  
 Shape and Cutting Style **ROUND BRILLIANT**  
 Measurements **4.36 - 4.37 X 2.66 MM**

### GRADING RESULTS

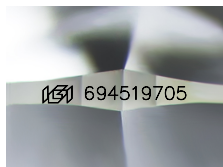
Carat Weight **0.31 CARAT**  
 Color Grade **H**  
 Clarity Grade **SI 2**  
 Cut Grade **EXCELLENT**

### ADDITIONAL GRADING INFORMATION

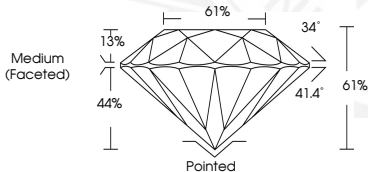
Polish **EXCELLENT**  
 Symmetry **EXCELLENT**  
 Fluorescence **NONE**  
 Identification Features **CRYSTAL, FEATHER**  
 Inscription(s) **IGI 694519705**

ELECTRONIC COPY

694519705



Sample Image Used



April 24, 2025  
 IGI Report Number **694519705**  
 ROUND BRILLIANT  
 NATURAL DIAMOND  
 4.36 - 4.37 X 2.66 MM  
 Carat Weight **0.31 CARAT**  
 Color Grade **H**  
 Clarity Grade **SI 2**  
 Cut Grade **EXCELLENT**  
 Polish **EXCELLENT**  
 Symmetry **EXCELLENT**  
 Fluorescence **NONE**  
 Inscription(s) **IGI 694519705**



April 24, 2025  
 IGI Report Number **694519705**  
 ROUND BRILLIANT  
 NATURAL DIAMOND  
 4.36 - 4.37 X 2.66 MM  
 Carat Weight **0.31 CARAT**  
 Color Grade **H**  
 Clarity Grade **SI 2**  
 Cut Grade **EXCELLENT**  
 Polish **EXCELLENT**  
 Symmetry **EXCELLENT**  
 Fluorescence **NONE**  
 Inscription(s) **IGI 694519705**

THIS DOCUMENT WAS PRODUCED WITH THE FOLLOWING SECURITY MEASURES: SPECIAL DOCUMENT PAPER, INK SCREENS, WATERMARK, BACKGROUND DESIGN, HOLOGRAM AND OTHER SECURITY FEATURES NOT LISTED AND DO EXCEED DOCUMENT SECURITY INDUSTRY GUIDELINES.

For terms & conditions and to verify this report, please visit [www.igi.org](http://www.igi.org)