



# INTERNATIONAL GEMOLOGICAL INSTITUTE

## DIAMOND REPORT

April 22, 2025  
 IGI Report Number **694527614**  
 Description **NATURAL DIAMOND**  
 Shape and Cutting Style **ROUND BRILLIANT**  
 Measurements **5.16 - 5.19 X 3.15 MM**

### GRADING RESULTS

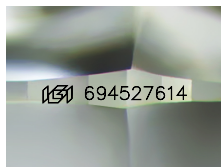
Carat Weight **0.52 CARAT**  
 Color Grade **F**  
 Clarity Grade **VVS 2**  
 Cut Grade **EXCELLENT**

### ADDITIONAL GRADING INFORMATION

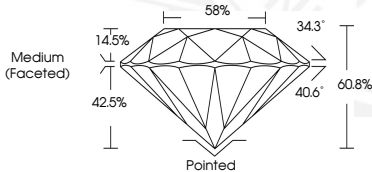
Polish **EXCELLENT**  
 Symmetry **EXCELLENT**  
 Fluorescence **VERY SLIGHT**  
 Identification Features **CRYSTAL**  
 Inscription(s) **IGI 694527614**  
 Comments: IDEAL CUT ROUND BRILLIANT

ELECTRONIC COPY

694527614



Sample Image Used



April 22, 2025  
 IGI Report Number **694527614**  
 ROUND BRILLIANT  
 NATURAL DIAMOND  
 5.16 - 5.19 X 3.15 MM  
 Carat Weight **0.52 CARAT**  
 Color Grade **F**  
 Clarity Grade **VVS 2**  
 Cut Grade **EXCELLENT**  
 Polish **EXCELLENT**  
 Symmetry **EXCELLENT**  
 Fluorescence **VERY SLIGHT**  
 Inscription(s) **IGI 694527614**  
 Comments: IDEAL CUT ROUND BRILLIANT



April 22, 2025  
 IGI Report Number **694527614**  
 ROUND BRILLIANT  
 NATURAL DIAMOND  
 5.16 - 5.19 X 3.15 MM  
 Carat Weight **0.52 CARAT**  
 Color Grade **F**  
 Clarity Grade **VVS 2**  
 Cut Grade **EXCELLENT**  
 Polish **EXCELLENT**  
 Symmetry **EXCELLENT**  
 Fluorescence **VERY SLIGHT**  
 Inscription(s) **IGI 694527614**  
 Comments: IDEAL CUT ROUND BRILLIANT

THIS DOCUMENT WAS PRODUCED WITH THE FOLLOWING SECURITY MEASURES: SPECIAL DOCUMENT PAPER, INK SCREENS, WATERMARK, BACKGROUND DESIGN, HOLOGRAM AND OTHER SECURITY FEATURES NOT LISTED AND DO EXCEED DOCUMENT SECURITY INDUSTRY GUIDELINES.

For terms & conditions and to verify this report, please visit [www.igi.org](http://www.igi.org)