



**INTERNATIONAL
GEMOLOGICAL
INSTITUTE**

DIAMOND REPORT

May 12, 2025
 IGI Report Number **700584035**
 Description **NATURAL DIAMOND**
 Shape and Cutting Style **ROUND BRILLIANT**
 Measurements **6.22 - 6.24 X 3.85 MM**

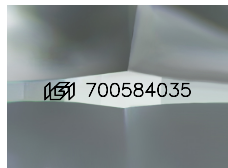
GRADING RESULTS

Carat Weight **0.90 CARAT**
 Color Grade **G**
 Clarity Grade **VS 1**
 Cut Grade **EXCELLENT**

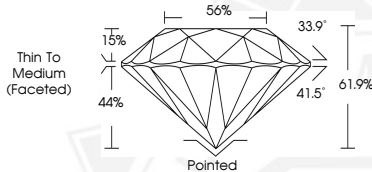
ADDITIONAL GRADING INFORMATION

Polish **EXCELLENT**
 Symmetry **EXCELLENT**
 Fluorescence **VERY SLIGHT**
 Identification Features **FEATHER, CLOUD, CRYSTAL**
 Inscription(s) **IGI 700584035**

ELECTRONIC COPY



Sample Image Used



May 12, 2025
 IGI Report Number **700584035**
 ROUND BRILLIANT
 NATURAL DIAMOND
 6.22 - 6.24 X 3.85 MM
 Carat Weight **0.90 CARAT**
 Color Grade **G**
 Clarity Grade **VS 1**
 Cut Grade **EXCELLENT**
 Polish **EXCELLENT**
 Symmetry **EXCELLENT**
 Fluorescence **VERY SLIGHT**
 Inscription(s) **IGI 700584035**



May 12, 2025
 IGI Report Number **700584035**
 ROUND BRILLIANT
 NATURAL DIAMOND
 6.22 - 6.24 X 3.85 MM
 Carat Weight **0.90 CARAT**
 Color Grade **G**
 Clarity Grade **VS 1**
 Cut Grade **EXCELLENT**
 Polish **EXCELLENT**
 Symmetry **EXCELLENT**
 Fluorescence **VERY SLIGHT**
 Inscription(s) **IGI 700584035**

 THIS DOCUMENT WAS PRODUCED WITH THE FOLLOWING SECURITY MEASURES: SPECIAL DOCUMENT PAPER, INK SCREENS, WATERMARK, BACKGROUND DESIGN, HOLOGRAM AND OTHER SECURITY FEATURES NOT LISTED AND DO EXCEED DOCUMENT SECURITY INDUSTRY GUIDELINES.

For terms & conditions and to verify this report, please visit www.igi.org