



DIAMOND REPORT

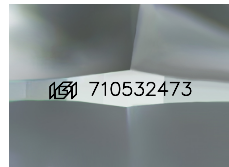
July 2, 2025
 IGI Report Number **710532473**
 Description **NATURAL DIAMOND**
 Shape and Cutting Style **ROUND BRILLIANT**
 Measurements **4.89 - 4.90 X 3.00 MM**

GRADING RESULTS

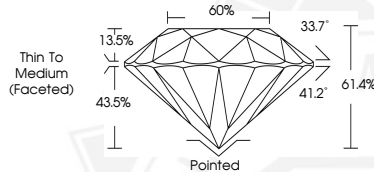
Carat Weight **0.44 CARAT**
 Color Grade **D**
 Clarity Grade **SI 1**
 Cut Grade **EXCELLENT**

ADDITIONAL GRADING INFORMATION

Polish **EXCELLENT**
 Symmetry **EXCELLENT**
 Fluorescence **VERY SLIGHT**
 Identification Features **FEATHER, CRYSTAL**
 Inscription(s) **IGI 710532473**



Sample Image Used



July 2, 2025
 IGI Report Number **710532473**
 ROUND BRILLIANT
 NATURAL DIAMOND
 4.89 - 4.90 X 3.00 MM
 Carat Weight **0.44 CARAT**
 Color Grade **D**
 Clarity Grade **SI 1**
 Cut Grade **EXCELLENT**
 Polish **EXCELLENT**
 Symmetry **EXCELLENT**
 Fluorescence **VERY SLIGHT**
 Inscription(s) **IGI 710532473**



July 2, 2025
 IGI Report Number **710532473**
 ROUND BRILLIANT
 NATURAL DIAMOND
 4.89 - 4.90 X 3.00 MM
 Carat Weight **0.44 CARAT**
 Color Grade **D**
 Clarity Grade **SI 1**
 Cut Grade **EXCELLENT**
 Polish **EXCELLENT**
 Symmetry **EXCELLENT**
 Fluorescence **VERY SLIGHT**
 Inscription(s) **IGI 710532473**



THIS DOCUMENT WAS PRODUCED WITH THE FOLLOWING SECURITY MEASURES: SPECIAL DOCUMENT PAPER, INK SCREENS, WATERMARK, BACKGROUND DESIGNS, HOLOGRAM AND OTHER SECURITY FEATURES NOT LISTED AND DO EXCEED DOCUMENT SECURITY INDUSTRY GUIDELINES.