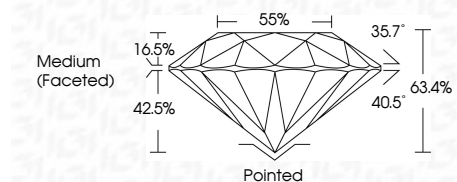




June 27, 2025
IGI Report Number **712528066**
Description **NATURAL DIAMOND**
Shape and Cutting Style **ROUND BRILLIANT**
Measurements **5.84 - 5.88 X 3.72 MM**

GRADING RESULTS

Carat Weight **0.80 CARAT**
Color Grade **F**
Clarity Grade **VVS 2**
Cut Grade **EXCELLENT**



ADDITIONAL GRADING INFORMATION

Polish **EXCELLENT**
Symmetry **EXCELLENT**
Fluorescence **SLIGHT**
Inscription(s) **IGI 712528066**



IGI

June 27, 2025
IGI Report No 712528066
ROUND BRILLIANT
5.84 - 5.88 X 3.72 MM
0.80 CARAT
F
VVS 2
EXCELLENT
63.4%
85%
Medium (Faceted)
Pointed
EXCELLENT
EXCELLENT
SLIGHT
IGI 712528066

ELECTRONIC COPY

DIAMOND REPORT

June 27, 2025
IGI Report Number **712528066**
Description **NATURAL DIAMOND**
Shape and Cutting Style **ROUND BRILLIANT**
Measurements **5.84 - 5.88 X 3.72 MM**

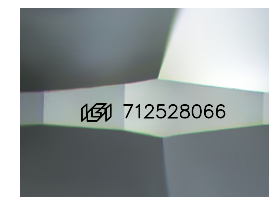
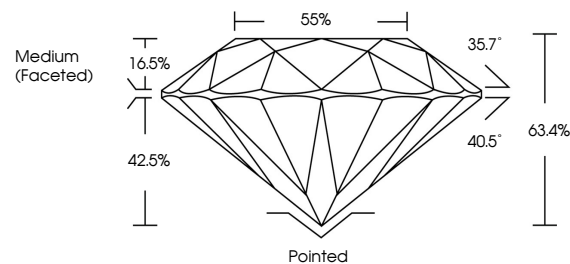
GRADING RESULTS

Carat Weight **0.80 CARAT**
Color Grade **F**
Clarity Grade **VVS 2**
Cut Grade **EXCELLENT**

ADDITIONAL GRADING INFORMATION

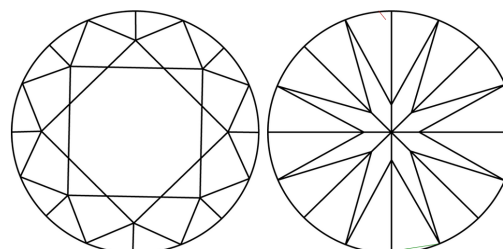
Polish **EXCELLENT**
Symmetry **EXCELLENT**
Fluorescence **SLIGHT**
Inscription(s) **IGI 712528066**

PROPORTIONS



Sample Image Used

CLARITY CHARACTERISTICS



KEY TO SYMBOLS

Red symbols indicate internal characteristics.
Green symbols indicate external characteristics.

COLOR

D - F	G - J	K - M	N - R	S - Z	FANCY
Colorless	Near Colorless	Slightly Tinted	Very Light Color	Light Color	

CLARITY

IF	VVS ¹⁻²	VS ¹⁻²	SI ¹⁻²	I ¹⁻³
Internally Flawless	Very Very Slightly Included	Very Slightly Included	Slightly Included	Included

