



DIAMOND REPORT

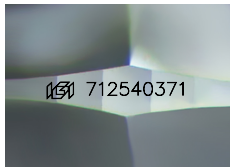
July 7, 2025
 IGI Report Number **712540371**
 Description **NATURAL DIAMOND**
 Shape and Cutting Style **ROUND BRILLIANT**
 Measurements **4.67 - 4.70 X 2.95 MM**

GRADING RESULTS

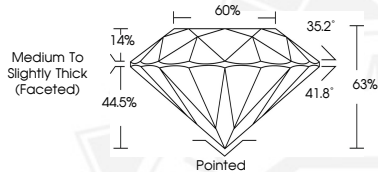
Carat Weight **0.40 CARAT**
 Color Grade **H**
 Clarity Grade **SI 1**
 Cut Grade **EXCELLENT**

ADDITIONAL GRADING INFORMATION

Polish **EXCELLENT**
 Symmetry **EXCELLENT**
 Fluorescence **NONE**
 Identification Features **NEEDLE, CHIP, CAVITY**
 Inscription(s) **IGI 712540371**



Sample Image Used



July 7, 2025
 IGI Report Number **712540371**
 ROUND BRILLIANT
 NATURAL DIAMOND
 4.67 - 4.70 X 2.95 MM
 Carat Weight **0.40 CARAT**
 Color Grade **H**
 Clarity Grade **SI 1**
 Cut Grade **EXCELLENT**
 Polish **EXCELLENT**
 Symmetry **EXCELLENT**
 Fluorescence **NONE**
 Inscription(s) **IGI 712540371**



July 7, 2025
 IGI Report Number **712540371**
 ROUND BRILLIANT
 NATURAL DIAMOND
 4.67 - 4.70 X 2.95 MM
 Carat Weight **0.40 CARAT**
 Color Grade **H**
 Clarity Grade **SI 1**
 Cut Grade **EXCELLENT**
 Polish **EXCELLENT**
 Symmetry **EXCELLENT**
 Fluorescence **NONE**
 Inscription(s) **IGI 712540371**



THIS DOCUMENT WAS PRODUCED WITH THE FOLLOWING SECURITY MEASURES: SPECIAL DOCUMENT PAPER, INK SCREENS, WATERMARK, BACKGROUND DESIGNS, HOLOGRAM AND OTHER SECURITY FEATURES NOT LISTED AND DO EXCEED DOCUMENT SECURITY INDUSTRY GUIDELINES.