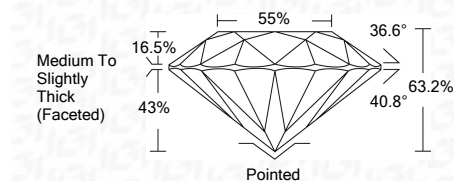




July 29, 2025
IGI Report Number **719565951**
Description **NATURAL DIAMOND**
Shape and Cutting Style **ROUND BRILLIANT**
Measurements **6.31 - 6.35 X 4.01 MM**

GRADING RESULTS
Carat Weight **1.00 CARAT**
Color Grade **D**
Clarity Grade **VS 2**
Cut Grade **EXCELLENT**



ADDITIONAL GRADING INFORMATION
Polish **EXCELLENT**
Symmetry **EXCELLENT**
Fluorescence **NONE**
Inscription(s) **(IGI) 719565951**



July 29, 2025
IGI Report No 719565951
ROUND BRILLIANT
6.31 - 6.35 X 4.01 MM
1.00 CARAT
D
VS 2
EXCELLENT
63.2%
55%
Medium To Slightly Thick (Faceted)
Pointed
EXCELLENT
EXCELLENT
NONE
(IGI) 719565951

ELECTRONIC COPY

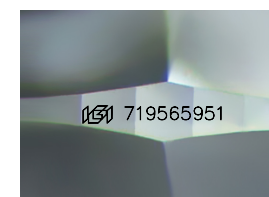
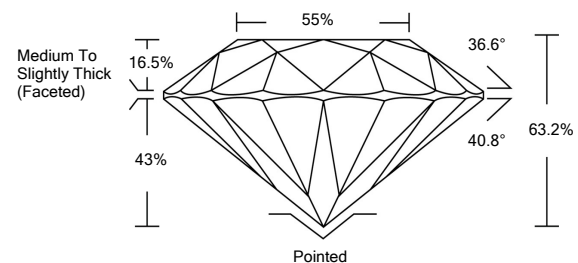
DIAMOND REPORT

July 29, 2025
IGI Report Number **719565951**
Description **NATURAL DIAMOND**
Shape and Cutting Style **ROUND BRILLIANT**
Measurements **6.31 - 6.35 X 4.01 MM**

GRADING RESULTS
Carat Weight **1.00 CARAT**
Color Grade **D**
Clarity Grade **VS 2**
Cut Grade **EXCELLENT**

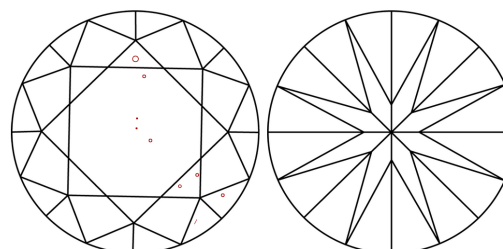
ADDITIONAL GRADING INFORMATION
Polish **EXCELLENT**
Symmetry **EXCELLENT**
Fluorescence **NONE**
Inscription(s) **(IGI) 719565951**

PROPORTIONS



Sample Image Used

CLARITY CHARACTERISTICS



KEY TO SYMBOLS

Red symbols indicate internal characteristics.
Green symbols indicate external characteristics.

COLOR

D - F	G - J	K - M	N - R	S - Z	FANCY
Colorless	Near Colorless	Slightly Tinted	Very Light Color	Light Color	

CLARITY

IF	VVS ¹⁻²	VS ¹⁻²	SI ¹⁻²	I ¹⁻³
Internally Flawless	Very Very Slightly Included	Very Slightly Included	Slightly Included	Included

