



**DIAMOND REPORT**

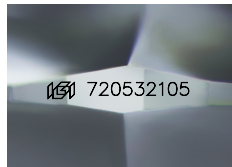
|                         |                              |
|-------------------------|------------------------------|
| August 26, 2025         | <b>720532105</b>             |
| IGI Report Number       |                              |
| Description             | <b>NATURAL DIAMOND</b>       |
| Shape and Cutting Style | <b>ROUND BRILLIANT</b>       |
| Measurements            | <b>5.53 - 5.59 X 3.55 MM</b> |

**GRADING RESULTS**

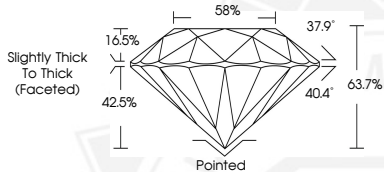
|               |                   |
|---------------|-------------------|
| Carat Weight  | <b>0.70 CARAT</b> |
| Color Grade   | <b>E</b>          |
| Clarity Grade | <b>SI 1</b>       |
| Cut Grade     | <b>VERY GOOD</b>  |

**ADDITIONAL GRADING INFORMATION**

|                         |                      |
|-------------------------|----------------------|
| Polish                  | <b>EXCELLENT</b>     |
| Symmetry                | <b>EXCELLENT</b>     |
| Fluorescence            | <b>VERY SLIGHT</b>   |
| Identification Features | <b>CRYSTAL CLOUD</b> |
| Inscription(s)          | <b>(G) 720532105</b> |



Sample Image Used



August 26, 2025  
**IGI Report Number 720532105**  
**ROUND BRILLIANT**  
**NATURAL DIAMOND**  
**5.53 - 5.59 X 3.55 MM**

|                |                      |
|----------------|----------------------|
| Carat Weight   | <b>0.70 CARAT</b>    |
| Color Grade    | <b>E</b>             |
| Clarity Grade  | <b>SI 1</b>          |
| Cut Grade      | <b>VERY GOOD</b>     |
| Polish         | <b>EXCELLENT</b>     |
| Symmetry       | <b>EXCELLENT</b>     |
| Fluorescence   | <b>VERY SLIGHT</b>   |
| Inscription(s) | <b>(G) 720532105</b> |



August 26, 2025  
**IGI Report Number 720532105**  
**ROUND BRILLIANT**  
**NATURAL DIAMOND**  
**5.53 - 5.59 X 3.55 MM**

|                |                      |
|----------------|----------------------|
| Carat Weight   | <b>0.70 CARAT</b>    |
| Color Grade    | <b>E</b>             |
| Clarity Grade  | <b>SI 1</b>          |
| Cut Grade      | <b>VERY GOOD</b>     |
| Polish         | <b>EXCELLENT</b>     |
| Symmetry       | <b>EXCELLENT</b>     |
| Fluorescence   | <b>VERY SLIGHT</b>   |
| Inscription(s) | <b>(G) 720532105</b> |



THIS DOCUMENT WAS PRODUCED WITH THE FOLLOWING SECURITY MEASURES: SPECIAL DOCUMENT PAPER, INK SCREENS, WATERMARK, BACKGROUND DESIGNS, HOLOGRAM AND OTHER SECURITY FEATURES NOT LISTED AND DO EXCEED DOCUMENT SECURITY INDUSTRY GUIDELINES.