



September 2, 2025

IGI Report Number 723547611

ROUND BRILLIANT

NATURAL DIAMOND

4.35 - 4.37 X 2.73 MM

Carat Weight 0.32 CARAT

Color Grade E

Clarity Grade VS 1

Cut Grade EXCELLENT

Polish EXCELLENT

Symmetry EXCELLENT

Fluorescence VERY SLIGHT

Inscription(s) IGI 723547611

DIAMOND REPORT

September 2, 2025

IGI Report Number

723547611

Description

NATURAL DIAMOND

Shape and Cutting Style

ROUND BRILLIANT

Measurements

4.35 - 4.37 X 2.73 MM

GRADING RESULTS

Carat Weight

0.32 CARAT

Color Grade

E

Clarity Grade

VS 1

Cut Grade

EXCELLENT

ADDITIONAL GRADING INFORMATION

Polish

EXCELLENT

Symmetry

EXCELLENT

Fluorescence

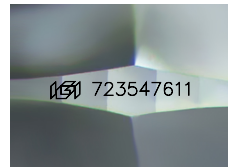
VERY SLIGHT

Identification Features

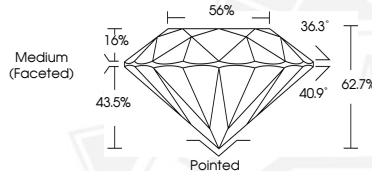
CRYSTAL, PINPOINT

Inscription(s)

IGI 723547611



Sample Image Used



September 2, 2025

IGI Report Number 723547611

ROUND BRILLIANT

NATURAL DIAMOND

4.35 - 4.37 X 2.73 MM

Carat Weight 0.32 CARAT

Color Grade E

Clarity Grade VS 1

Cut Grade EXCELLENT

Polish EXCELLENT

Symmetry EXCELLENT

Fluorescence VERY SLIGHT

Inscription(s) IGI 723547611



THIS DOCUMENT WAS PRODUCED WITH THE FOLLOWING SECURITY MEASURES: SPECIAL DOCUMENT PAPER, INK SCREENS, WATERMARK, BACKGROUND DESIGNS, HOLOGRAM AND OTHER SECURITY FEATURES NOT LISTED AND DO EXCEED DOCUMENT SECURITY INDUSTRY GUIDELINES.