



**DIAMOND REPORT**

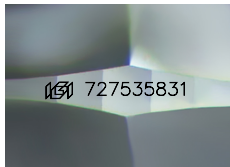
August 26, 2025  
 IGI Report Number **727535831**  
 Description **NATURAL DIAMOND**  
 Shape and Cutting Style **ROUND BRILLIANT**  
 Measurements **5.19 - 5.22 X 3.22 MM**

**GRADING RESULTS**

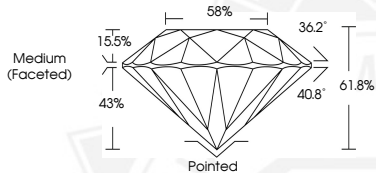
Carat Weight **0.54 CARAT**  
 Color Grade **F**  
 Clarity Grade **VVS 1**  
 Cut Grade **EXCELLENT**

**ADDITIONAL GRADING INFORMATION**

Polish **EXCELLENT**  
 Symmetry **EXCELLENT**  
 Fluorescence **VERY SLIGHT**  
 Identification Features **PINPOINT**  
 Inscription(s) **(IGI) 727535831**  
 Comments: IDEAL CUT ROUND BRILLIANT



Sample Image Used



August 26, 2025  
 IGI Report Number **727535831**  
 ROUND BRILLIANT  
 NATURAL DIAMOND  
 5.19 - 5.22 X 3.22 MM  
 Carat Weight **0.54 CARAT**  
 Color Grade **F**  
 Clarity Grade **VVS 1**  
 Cut Grade **EXCELLENT**  
 Polish **EXCELLENT**  
 Symmetry **EXCELLENT**  
 Fluorescence **VERY SLIGHT**  
 Inscription(s) **(IGI) 727535831**  
 Comments: IDEAL CUT ROUND BRILLIANT



August 26, 2025  
 IGI Report Number **727535831**  
 ROUND BRILLIANT  
 NATURAL DIAMOND  
 5.19 - 5.22 X 3.22 MM  
 Carat Weight **0.54 CARAT**  
 Color Grade **F**  
 Clarity Grade **VVS 1**  
 Cut Grade **EXCELLENT**  
 Polish **EXCELLENT**  
 Symmetry **EXCELLENT**  
 Fluorescence **VERY SLIGHT**  
 Inscription(s) **(IGI) 727535831**  
 Comments: IDEAL CUT ROUND BRILLIANT



THIS DOCUMENT WAS PRODUCED WITH THE FOLLOWING SECURITY MEASURES: SPECIAL DOCUMENT PAPER, INK SCREENS, WATERMARK, BACKGROUND DESIGNS, HOLOGRAM AND OTHER SECURITY FEATURES NOT LISTED AND DO EXCEED DOCUMENT SECURITY INDUSTRY GUIDELINES.