



729551941  
Report verification at [igi.org](http://igi.org)



September 16, 2025

IGI Report Number **729551941**

Description **NATURAL DIAMOND**

Shape and Cutting Style **ROUND BRILLIANT**

Measurements **4.09 - 4.11 X 2.44 MM**

**GRADING RESULTS**

Carat Weight **0.25 CARAT**

Color Grade **D**

Clarity Grade **VVS 1**

Cut Grade **EXCELLENT**

**ELECTRONIC COPY**

**DIAMOND REPORT**

September 16, 2025

IGI Report Number **729551941**

Description **NATURAL DIAMOND**

Shape and Cutting Style **ROUND BRILLIANT**

Measurements **4.09 - 4.11 X 2.44 MM**

**GRADING RESULTS**

Carat Weight **0.25 CARAT**

Color Grade **D**

Clarity Grade **VVS 1**

Cut Grade **EXCELLENT**

**ADDITIONAL GRADING INFORMATION**

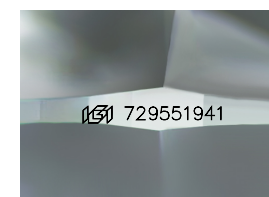
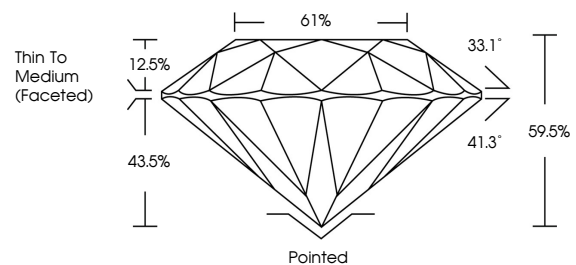
Polish **EXCELLENT**

Symmetry **EXCELLENT**

Fluorescence **SLIGHT**

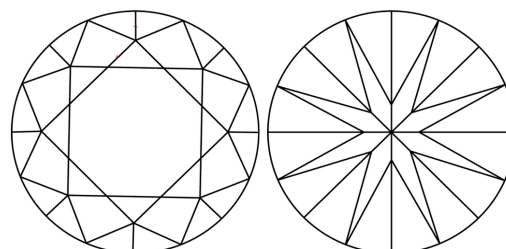
Inscription(s) 729551941

**PROPORTIONS**



Sample Image Used

**CLARITY CHARACTERISTICS**



**KEY TO SYMBOLS**

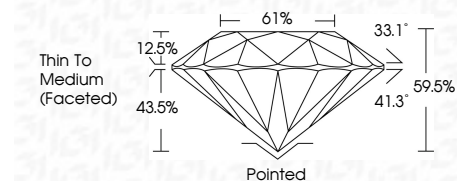
Red symbols indicate internal characteristics.  
Green symbols indicate external characteristics.

**COLOR**

D - F	G - J	K - M	N - R	S - Z	FANCY
Colorless	Near Colorless	Slightly Tinted	Very Light Color	Light Color	

**CLARITY**

IF	VVS <sup>1-2</sup>	VS <sup>1-2</sup>	SI <sup>1-2</sup>	I <sup>1-3</sup>
Internally Flawless	Very Very Slightly Included	Very Slightly Included	Slightly Included	Included



**ADDITIONAL GRADING INFORMATION**

Polish **EXCELLENT**

Symmetry **EXCELLENT**

Fluorescence **SLIGHT**

Inscription(s) 729551941



**IGI**



September 16, 2025  
IGI Report No 729551941  
**ROUND BRILLIANT**  
0.25 CARAT  
D  
EXCELLENT  
VVS 1  
EXCELLENT  
43.5%  
61%  
Thin To Medium (Faceted)  
Pointed  
EXCELLENT  
EXCELLENT  
SLIGHT  
EXCELLENT  
 729551941